

PARADE PLANNING

September 11, 2024



MEMORY MAKING!



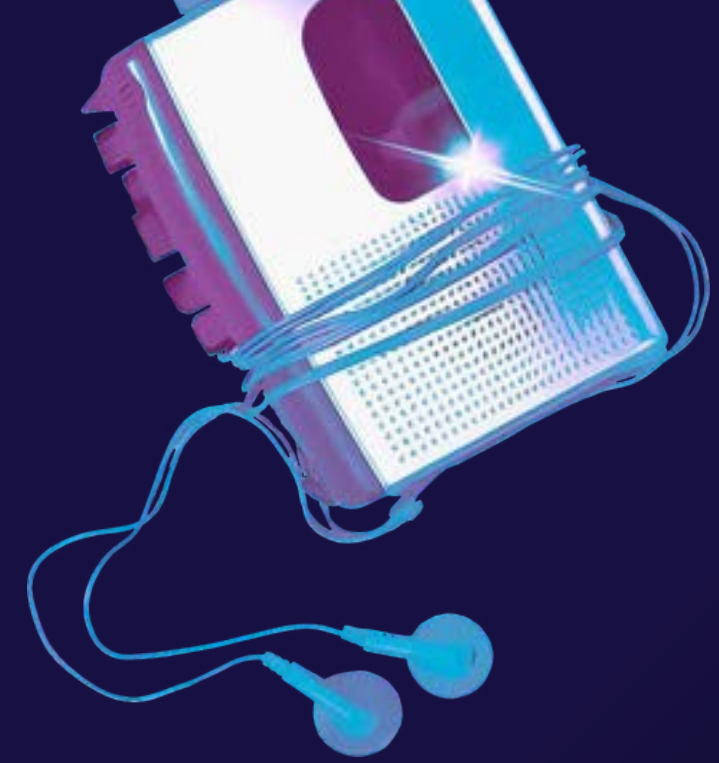
Parade Planning



THIS YEAR'S THEME: BACK TO THE 80'S

Dress in theme: leg warmers, off-the-shoulder tops, BIG hair, neon colors, parachute pants, Members Only jackets. The possibilities are **ENDLESS!**

- Build a float!
- Hand out goodies! (just don't toss or throw them)
- Dress in theme!
- WIN cash prizes!



Categories MAY include:

Reflection of Theme

Best in Show

Most Creative



Parade Planning



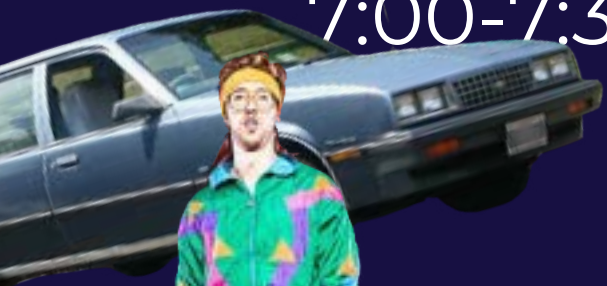
PARTICIPATION POLICY

APPROVED JULY 2021

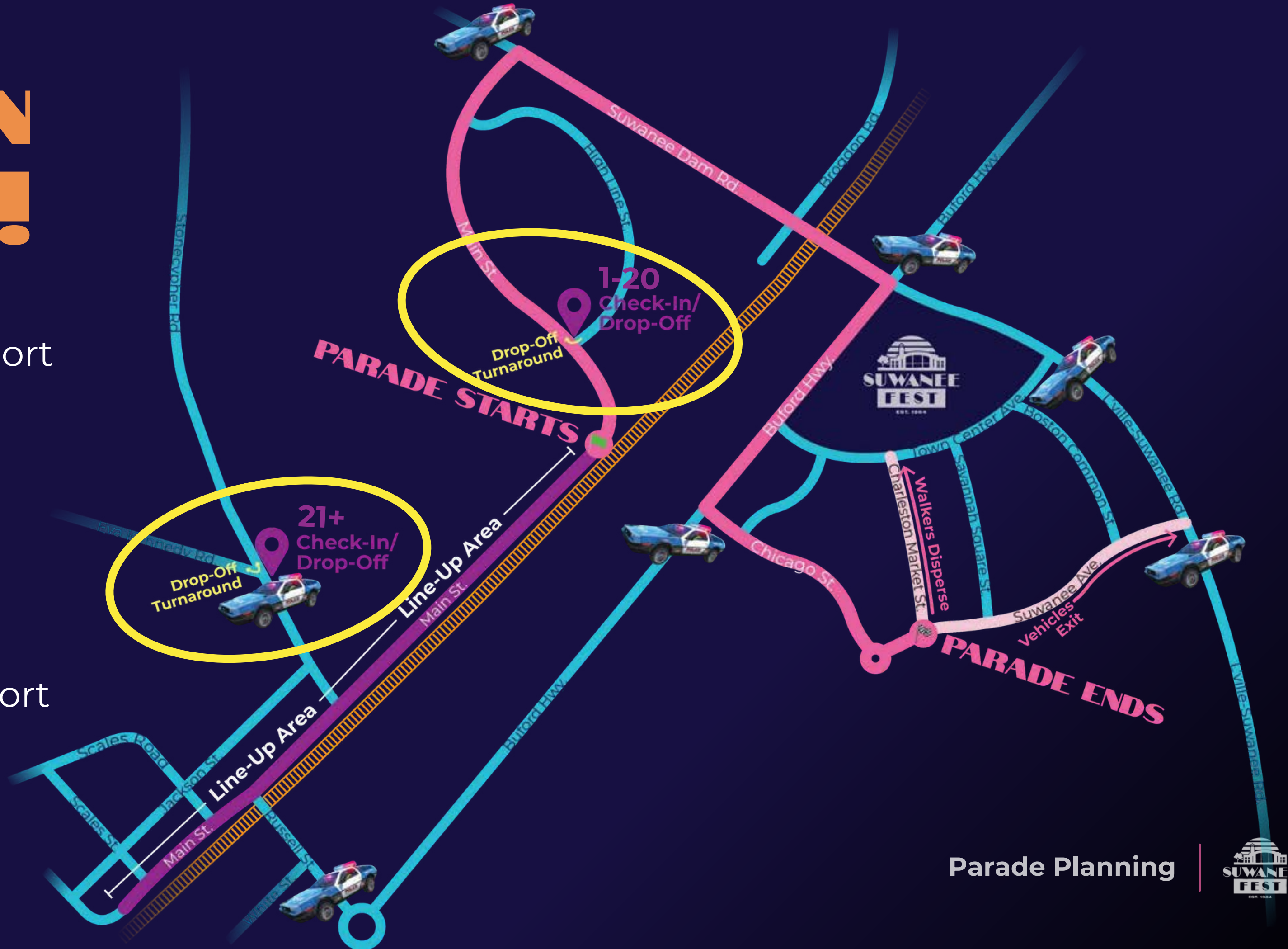
- ➔ The purpose of the parade is primarily for entertainment value.
- ➔ As such, we welcome local performers, groups, non-profits, and community members.
- ➔ Any political candidates must represent local voters (ie, Suwanee city, Gwinnett County, etc.) **and must be physically present** in the parade.
- ➔ We do not permit general political groups, party-specific or general advocacy groups, movements, or political causes.
- ➔ Political candidates and corporate/business entries are **limited to one vehicle (preferably decorated to reflect the theme) and up to 20 walkers.**
- ➔ Parade organizers can review all entries and reject groups deemed controversial, unlawful, offensive, profane, etc. or that do not reflect the spirit and entertainment purpose of the parade.

GET IN LINE!

Vehicles: report
7:00-7:30am



Walkers: report
7:30-8:30am



Parade Planning



NO VEHICLES EXCEPT THOSE IN THE PARADE!

- ➔ You will NOT be permitted to drive to your spot UNLESS you have an official Parade Vehicle pass displayed. You cannot drop your kid at their space!
- ➔ We will have volunteers available to walk minors to their lineup. YOUR GROUP is responsible for having adults to monitor them at your line-up number.
- ➔ Sorry – but we cannot deliver food, doughnuts, forgotten instruments, etc. to your children in the line-up. Plan for these bulky items – bring a wagon or something similar for transport!



CURB APPEAL!

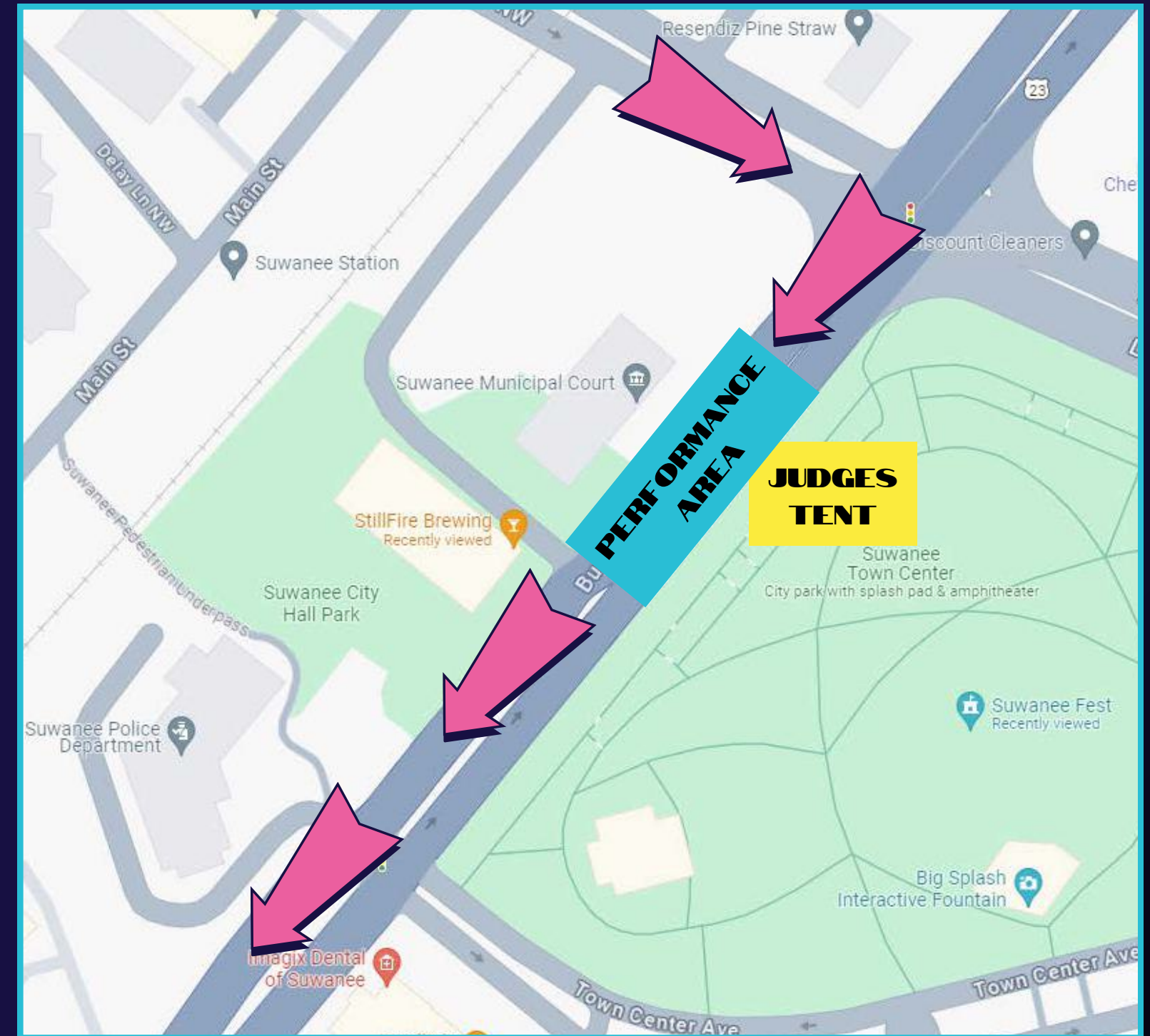


Parade Planning



THE BUFORD HWY SOLUTION!

- ➔ If your group is performing, **STOP** to perform on the SOUTHBOUND lanes (park-side).
- ➔ This section is 3 lanes wide – plenty of space!
- ➔ AFTER performing (or if you are NOT stopping to perform at all) – KEEP walking south down Buford Hwy all the way to CHICAGO AVE.
- ➔ The median SHIFTS LANES just past StillFire Brewing.
- ➔ We will have volunteers stationed along the median to remind everyone, but PLEASE...



Watch your step!

Parade Planning



PARADE JUDGING

Once you make the turn onto Buford Highway, Judges will be **across from the COURT BUILDING**.

YOU DO NOT NEED TO PERFORM, BUT IF YOU DO...

- ➔ Limit performance time to 60 seconds!
- ➔ This is not a full song or a full dance routine.
- ➔ Practice your timing.
- ➔ No sound system will be provided.
- ➔ **Have fun with it!**



Parade Planning



AMENITIES

Portable restrooms are located at the corner of Eva Kennedy and Stonecypher.

A changing tent with sides will be in this location as well.

Please plan to remove your own trash.



PARKING

Air-conditioned, pet-friendly shuttles run on Saturday from **three lots**. Shuttles begin at 8:00 am.

ALL PARTICIPANTS

Consider parking at Great Scott! (Shadowbrook Church). Walk down the sidewalk on Main Street to the check-in point.



GROUP LEADERS

If you have a group of students/scouts/kids:

You are responsible for:

- Communicating line-up number and time slot to your organization!
- Sharing parade rules from this meeting with all participants.
- Supervising children and having adults present.
- Arranging carpool, drop-offs and pick-up.
Collecting liability waivers for minors (can be found on our website).

TIPS

Have at least ONE adult wait at check-in area and ONE at your line-up spot.

We will have *some* volunteers walking kids FROM the drop-off points TO their space in line, but the volunteers are NOT babysitters! They will not be waiting with kids.

WAIVERS

**SUWANEE FEST
PARADE PERMISSION FORM**

PLEASE DO NOT MAIL OR FAX THIS DOCUMENT
TO THE CITY OF SUWANEE
OR TO THE SUWANEE FEST PARADE COMMITTEE.

PROVIDE THIS COMPLETED FORM TO THE PERSON(S)
RESPONSIBLE FOR YOUR CHILD DURING THE PARADE
(E.G., SCOUT LEADER, BAND DIRECTOR, ETC.)

Permission is given for _____ to participate in
the Suwanee Fest 2021 Parade (whether walking or riding).

Details about drop off and pick-up will be available from your parade group
coordinator.

The undersigned does hereby release and forever discharge the City of
Suwanee, Georgia, and the Suwanee Fest Committee from any responsibility for
the safety and well-being of the individual named above.

Parent or Legal Guardian Signature

Address

Phone Number

Date

All organizations are required to provide adult supervision for children in their
group throughout the entire parade line-up time until they are picked up by a
parent or guardian.

- ➔ Collect a **waiver** for each child in your group.
- ➔ Parent/guardian should sign and return to **YOU** (not to the City or any parade volunteer).
- ➔ Available at suwaneefest.com/parade
– print as many copies as you need or e-mail them to your group.

PICK-UP INSTRUCTIONS

You will **NOT** be able to drive a car into here. Don't even try it!

NOT here!

HERE!

Meet walkers **BEHIND CITY HALL** on Chicago Street (lawn)

or

Older children/participants can walk into the festival and meet-up.

PARADE ENDS

Parade Planning



PICK-UP INSTRUCTIONS



- **NO VEHICLES** will be permitted to drive into the neighborhood to retrieve walkers!
- All pick-ups should be **BEHIND City Hall ON FOOT.**
- Instruct parents to use the free shuttles to Town Center Park to meet their children.
- Shuttle drop-off at Town Center Park is at Lawrenceville-Suwanee Rd during the parade.
- Regular routes resume after the parade concludes (shuttles pick-up behind Ippolito's).

YES!

Arrange drop-off, pick-up in advance.

Dress in theme! Build a float!

Bring waters, snacks for your group as line-up is over an hour wait.

Bring goodies to hand to parade viewers!

“Stash” ½ of your candy until you cross over the railroad tracks. That way, Buford Hwy folks get some, too!

Be on time for your line-up assignment.

PLEASE JUST DON'T:

Don't throw ANYTHING. Candy, giveaways, nothing.

Don't leave trash in your wake! Bring a trash bag and dispose of it.

Don't hold up the route – keep up with the group in front of you.

Performances should be no longer than 60 seconds at the Grandstand.

Don't try to drive on Main Street without a Parade Vehicle pass. That means, the vehicle is PART OF the parade.

Don't clog up the road at line-up – For practicing or otherwise. Keep to one side!

**THANK
YOU!!!!!!!**

