

Suwanee connects

suwanee.com | November 2018

INSIDE
this issue...

2



Suwanee Fest was
AWESOME!

6

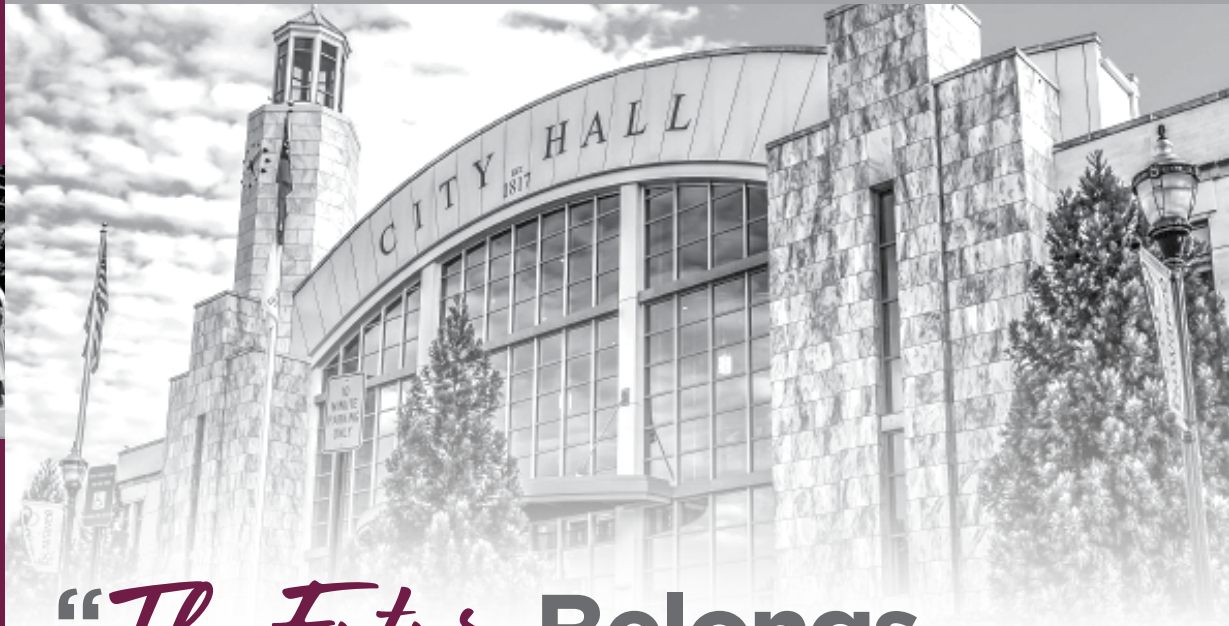


'Tis the season for
holiday events!

10



Annual Snap
Suwanee Photo
Contest



*“The Future Belongs
TO THOSE WHO
Prepare for it Today”*

City Updates Comprehensive Plan

In 2017, the City of Suwanee embarked on a major update to the Comprehensive Plan. An important tool that guides decisions about how to manage growth within the city, the 2040 Comprehensive Plan provides predictability for residents and property owners about the future use of land. The planning process included:

- Documenting progress the city has made in implementing long-range community goals
- Analyzing existing land use, demographics and market trends
- Identifying community wants and needs through focus group

interviews, an online survey, public open houses, and a series of meetings of a steering committee made up of community leaders assembled to provide feedback throughout the planning process.

Georgia requires local governments to update their Comprehensive Plan every ten years; the 2040 plan is an update to the 2030 plan, which was completed in 2008. Following a public hearing regarding the draft plan in October, Mayor and City Council approved a resolution to forward the 2040 Comprehensive Plan document to the Atlanta Regional Commission and Georgia Department of Community Affairs for review. Pending upon

continued on pg. 4



Our sincere appreciation to these businesses who are our awesome
SUWANEE FEST 2018 SPONSORS:

PRESENTING SPONSOR

HEARTIS
 SENIORS. LIVING.

PLATINUM SPONSORS



SUWANEE TOWN CENTER

GOLD SPONSORS

Good2Grow
 Power Home Remodeling

Quantum Bank
 Road Atlanta

SILVER SPONSORS

Atlanta Gladiators
 Bath Fitter
 Children's Healthcare of Atlanta
 Clear Path Family Chiropractic
 Cool Air Mechanical
 Costco Mall of Georgia
 Delta Community Credit Union
 Diamond Resorts
 Farmers Insurance - Hathaway Agency
 Free Chapel
 Gwinnett Medical Center
 HomeCraft
 Imagix Dental
 Larabar

Lasik Eye Center
 Mitsubishi Electric
 North Atlanta Primary Care
 Odwalla Juice
 PeachSkin Sheets
 Pinnacle Home Improvements
 PNC Bank
 PrePress to Printing
 State Farm
 Suwanee Dental Care
 Taylor Construction
 Tiger Tails Animal Hospital
 True Source Family Chiropractic
 Whitney Orthodontics

★ ★ ★ ★ ★ ★ ★ ★ ★ ★
2018 PARADE
WINNERS
 ★ ★ ★ ★ ★ ★ ★ ★ ★ ★

BEST OF SHOW

- 1st - All Stars Performing Arts Academy
- 2nd - North Gwinnett High School Marching Band
- 3rd - Suwanee Magazine
- Honorable Mention - Cub Scout Pack 518

BEST REFLECTION OF THEME - "VINTAGE AMERICANA"

- 1st - Cub Scout Pack 518
- 2nd - Cub Scout Pack 1010
- 3rd - Suwanee United Methodist Church
- Honorable Mention - Gwinnett County Government/Gwinnett 200!

MOST CREATIVE

- 1st - North Gwinnett High School National Art Honor Society
- 2nd - Collins Hill High School Dance Team
- 3rd - Geekspace Gwinnett
- Honorable Mention - Peachtree Ridge Robotics Team

MOST ENTERTAINING

- 1st - North Gwinnett High School Air Force JROTC
- 2nd - North Gwinnett High School Dancers
- 3rd - North Gwinnett Middle School Orchestra
- Honorable Mention - Jazzercise Sugar Hill-Suwanee Dam

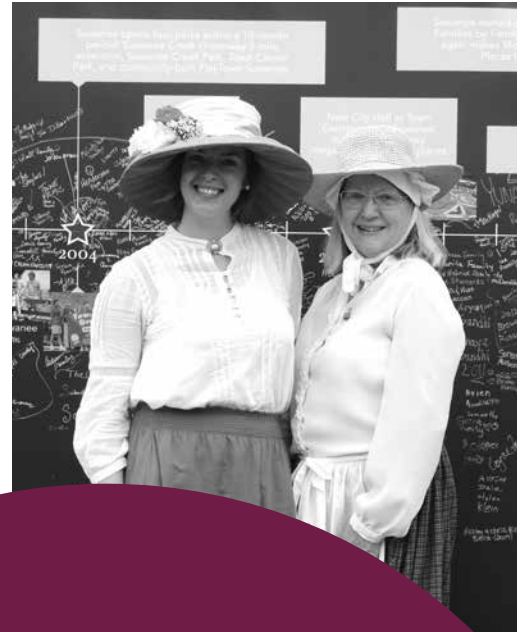


THESE FOLKS *make it happen!*

A volunteer committee works hard all year long to make sure that Suwanee Fest is the best it can be, year after year. Thank you, Suwanee Fest Committee members, for your time, enthusiasm, creativity, energy, dedication, and hard work!

- ★ Sponsorship - Paul Beavin
- ★ Entertainment - Michelle Budd, Donna Copeletti
- ★ Parade - Kate Fanale, Kelli Rodriguez, Oscar Rodriguez
- ★ Vendors - Janis Beavin, Cathy Karlick, Robin Sullivan
- ★ Food Vendors - David Sullivan
- ★ Transportation - Mauro Marcillo, Eric Wolman
- ★ Volunteers - Marcia Massie

We're always looking for new faces to join us! Suwanee Fest Committee meetings begin in January on the second Monday of the month at 6:30 pm at City Hall. For more information, contact Events & Outreach Manager Amy Doherty at adoherty@suwanee.com.



★ 2018 SUWANEE FEST ★
BEST IN SHOW
★ ★ ★ VENDORS ★ ★ ★

A Measure of Clay - *Mayor's Choice*

Walton Gas - *Parker's Choice*

Southern Addiction

Nailed to the Cross

Whitney Orthodontics



..... Suwanee2040 Vision Statement

Suwanee 2040 will be a safe, fun, attractive, inclusive, evolving city with a unique, vibrant downtown that is well-connected to established neighborhoods and commercial/employment opportunities.

Neighborhoods farther from downtown will be largely suburban, while development types closer to downtown will be taller, denser and highly walkable. **Town Center** will be the city's economic, social, and cultural hub. **Historic Old Town** will be characterized by a mixture of old and new quaint smaller

scale development integrated into the existing traditional fabric. **Suwanee Gateway** will serve local and regional commercial and employment needs. **Established neighborhoods** will continue to be an essential source of quality homes attractive to families.

Art, parks, greenways, and open space will be important elements for recreation and identity. Suwanee will continue to grow in a deliberate manner that enhances the city's varied communities and quality of life.

completion of this review, the plan will be adopted later this year.

Unlike the Downtown Suwanee Master Plan, which was completed in 2015 and specifically focuses on the Town Center and Old Town areas, the Comprehensive Plan is a city-wide plan which establishes the vision and goals for the city as well as subareas, called character areas. The plan prescribes specific goals and future development for each character area.

A key element of the plan is the vision statement, which paints the picture of what the community wants Suwanee to be in the year 2040. The vision statement was crafted by those that participated in the 2040 Plan planning process and vetted in public

open houses throughout the planning process. Two elements of the plan are used to implement the vision and goals:

- 1. The Future Land Use Map** prescribes a future land use for every parcel in the city. The map is the translation of the vision and goals established for each character area into a land use that would implement that vision.
- 2. The work program**, which is a to-do list for addressing the city's needs, comprised of action items and policies that move the city toward the community vision.



A draft of the 2040 Plan can be viewed in its entirety at Suwanee.com



KALE YEAW!

Winter Farmers Market Returns

It might not be peak growing season anymore, but our local farmers still have plenty of delicious grub for your winter table. While winter produce doesn't have the diversity of the warmer months, you can still find hearty vegetables, fruits, and locally made products at the Suwanee Winters Farmers Market.

The only year-round farmers market in the county, the Suwanee Farmers Market will continue on the second Saturday of the month, 9-11 am from October through April at Town Center Park. Stop by and enjoy fresh local winter produce, such as lettuces, greens, potatoes, carrots, Brussels sprouts, winter squashes, baked goods, and a variety of other delicious, local flavors.

"The Suwanee Farmers Market has a loyal customer and farmer base, and we're pleased to be able to offer it during the winter months," notes Suwanee Events Manager Amy Doherty. "Many of our favorite summer vendors will be there. Our market is almost as much a social event as it is an opportunity to access locally grown produce and a variety of other items, such as salsa, honey, eggs, meat, soaps, lotions, coffee, baked goods, and more."

Locavore lo·ca·vore / lōkə·vōr/ noun

NORTH AMERICAN

A person whose diet consists only or principally of locally grown or produced food; can be typically found at the Suwanee Farmers Market.

Run more than just your mouth.

5th Annual Suwanee Half Marathon & Old Town 5K

SUNDAY FEBRUARY 10, 2019

SAVE!

Register early at SuwaneeHalf.com

Before December 31: **\$65**
January 1 - February 7: **\$75**
Race Day: **\$85**

HALF MARATHON

Before December 31: **\$30**
January 1 - February 7: **\$35**
Race Day: **\$40**

5K



'Tis the SEASON

The City of Suwanee is finishing the event year strong with two events designed to get you into the holiday spirit

You better watch out, and you better not cry - Santa Claus is coming to Town (Center)! Join us on Friday, November 30 at 6:30 pm for our annual **Jolly Holly Day** celebration. Santa Claus will magically arrive to meet with children and families, while performances from local elementary school choruses and dance groups grace the stage. After lighting the Town Center Christmas tree, Santa will board his sleigh and

return to the North Pole to prepare for his Christmas night journey! Parents, be sure to bring cameras or phones to snap your own photos!

Come back to the park on Saturday, December 1 and get ready to deck your halls at **Happy Feet's Jingle in the Park!** The day kicks off with the Run, Run Rudolph 5K at 8 am, followed by a Mistletoe Market and Candy Cane Forest Family Fun Zone from 10:00 am until 6:00 pm. Live entertainment will take stage all day, leading up to a Live Nativity at 6:00 pm.



KIDS!
DON'T FORGET
YOUR CHRISTMAS
LISTS!

Free hot chocolate,
cookies, s'mores, and
holiday crafts

(while supplies last).



Parents, be sure to
bring cameras or
phones to snap your
own photos!

Other Upcoming Events



**Suwanee
Wine Fest**
Nov 3 | noon



**Suwanee Classic
Car Show**
Nov 11 | 10 am



**Peach State Chili
Cook-Off**
Nov 17 | noon

White Street Orchard Unveils WEATHER STATION

Built by North Gwinnett Students

On October 6, the North Gwinnett High School Robotics Club unveiled a unique, custom weather station they developed especially for the Orchard at White Street Park. The weather station tracks temperature, humidity, wind speed and direction, and precipitation. It also has the unique ability to combine data as it relates to growing fruits, including tracking “chill hours” through the dormant season (a statistic that determines how productive the crop will be) and providing frost and freeze warnings, which will help orchard managers plan for potentially damaging weather.

“One of my exceptional students, Savannah Hearn, attended the opening ceremony at the White Street Orchard. She met [Orchard architect] Roger Grant at that event, and volunteered the Robotics Team to make the weather station,” said Marcus Losser, North Gwinnett High School teacher and Robotics Club mentor. “Ms. Hearn’s enthusiasm easily convinced the leaders of the White Street Orchard to utilize the student team, which also includes Katie Park, Justin Desimplicis, and Andoni Fernandez.”

Once the objectives of the station were understood by the students, detailed designs were developed for the various software components related to the sensors, radios, and web display of the system. Software was developed, and they even rebuilt the interior of one sensor because they regarded the manufacturer’s design as substandard.

“The students learned advanced concepts through this project. I did not allow them to use cut-and-paste public software, so they learned device interface concepts at fundamental levels,” said Losser. “This project is ongoing, so it has and will continue to enrich the technical knowledge of the students. Projects of this nature are very valuable to students since they allow real world examples to grow from their classroom experience.”

This project was made possible by Kubota Tractor Corporation, which donated supplies and supported the effort of the robotics team to create something for the benefit of our community.



APPLICATIONS NOW BEING ACCEPTED FOR HARVEST FARM

Registration is now open for the 2019 season at Harvest Farm, Georgia’s largest organic community garden. Located in White Street Park, Harvest Farm offers 76 plots that can be rented on an annual basis to grow veggies, fruits, flowers, and herbs.

Plots are available in three different sizes:

- **Small plots (approximately 5’x 5’) \$50 per year**
- **Medium plots (approximately 5’x 9’) \$75 per year**
- **Large plots (approximately 5’x 12’) \$100 per year**

+ An annual \$15 registration fee

Annual fees include use of a raised bed, utilities, basic community tools, social and educational events, and compost (when available). Gardeners will incur personal expenses for seeds, plants, amendments, stakes, trellises, etc.

Plots are assigned on a first-come first-served basis with priority given to City residents/property owners/taxpayers. City of Suwanee residents/taxpayers also receive a 25 percent discount on registration fees. Since the success of the garden depends upon the support of its gardeners, each plot member is required to contribute 12 hours of volunteer service a year.

Applications can be submitted online at HarvestFarmSuwanee.com. The 2019 season will open January 1 and run through December 31.

COFFEE & PIZZA WITH POLICE

Suwanee Police Invite Citizens for Coffee, Pizza, and Conversation

In an effort to improve communication, gain trust, and build relationships, Suwanee Police Chief Mike Jones, Captain Cass Mooney, and Captain Shane Edmisten invited the citizens to join them for two different events in early October.

For the second time this year, the Suwanee Police hosted **Coffee with a Cop** on October 3 at Famous Toastery as part of National Coffee with a Cop Day. Launched in California in 2011 as a way for police to interact more successfully with the citizens they served each day, Coffee with a Cop events are now being hosted in all 50 states and is one of the most successful community oriented policing programs across the country.

The key to Coffee with a Cop's growing success is that it opens the door for interactions outside of the crisis situations that typically bring law enforcement officers and community members together. The national program aims to build trust and partnership between law enforcement and members of the community.

Additionally, the Suwanee Police hosted **Pizza with Police** on October 9 at the Suwanee Police Station.



This event was for the entire family, and featured free pizza, giveaways, and police vehicles on-hand for children to explore.

Citizens were invited to have a cup of joe or a slice of pizza, discuss issues that concern them or questions they may have, and just get to know the officers who keep our city safe.

"It's important for our officers to be out in the community when we are not involved in traditional police work," said Chief Jones. "It's a unique opportunity to discuss what is going on in both the department and the community, as well as build relationships with the people we serve."



The Gwinnett County Bicentennial Torch Relay arrived at Suwanee City Hall on October 2. The torch was relayed from George Pierce Park to City Hall by members of the North Gwinnett High School Cross Country Team.

Upon its arrival, Mayor Jimmy Burnette accepted the torch from the torchbearers and placed it on the stand at the top of the steps in front of City Hall. After the event, the torch moved into the City Hall lobby, where it remained for the next ten days - along with a traveling Gwinnett County history exhibit - before being relayed to its next stop in Duluth.

Gwinnett Bicentennial TORCH ARRIVAL

The bicentennial torch relay promotes Gwinnett's Bicentennial Year of Celebration, which spans December 15, 2017 to December 15, 2018. The torch made its debut at the first official bicentennial celebration event, A Frontier Affair: Prelude to Gwinnett's Bicentennial, held at the Gwinnett Historic Courthouse.

Like the torch of the Olympic Games, the torch represents goodwill and the connection between communities. The yearlong torch relay will cover approximately 200 miles, visiting historic sites, public facilities, and cities in Gwinnett. The relay will culminate at the county's 200th Birthday Celebration on December 15, 2018 at the Infinite Energy Center. For more information regarding the Gwinnett Bicentennial events, visit GwinnettCounty.com.



CITY NOW ACCEPTING APPLICATIONS FOR **Suwanee Youth Leaders** *Class of 2019*

About to enter its sixth year, the award-winning Suwanee Youth Leaders (SYL) program is accepting applications for its nine-month leadership program for high school sophomores and juniors. SYL is open to students who live in the North Gwinnett, Peachtree Ridge, and Collins Hill clusters, as well as home school and private school students who reside within those clusters. The program centers on civic involvement, leadership skills, and volunteer opportunities.

The 2019 SYL program kicks off with a mandatory two-day retreat in the spring.

Students then meet one Saturday each month March through November and are expected to volunteer at several community events which may include the August Concert, two Food Truck Friday events, Suwanee Fest, and Arts in the Park.

Applications are available at Suwanee.com and are due by December 1. For more information about SYL, contact Adam Edge at aedge@suwanee.com or Denise Brinson at denise@suwanee.com.

“The partnership with the City of Suwanee and Suwanee Youth Leaders provides an outstanding opportunity for our student leaders to learn about civic engagement. The program that Suwanee has created teaches critical soft skills, teamwork protocols, and ultimately event production that kids do not get to learn in traditional classroom settings. Not only do they get to work with and learn from amazing adults, but they also network with students from other clusters to create a collaborative relationship that makes all of our schools better.”

Kirsten Baker
*Assistant Principal, Leadership Development,
North Gwinnett High School*

“One of the most impactful lessons I learned at SYL is, “If not you, then who?” This simply means that if you are not going to make change, then who will? Our leaders talked about the values that they believe made them who they are today, and how we can discover our own values and carry them out as leaders ourselves. Through SYL I have had the chance to grow as a leader, and as a person.”

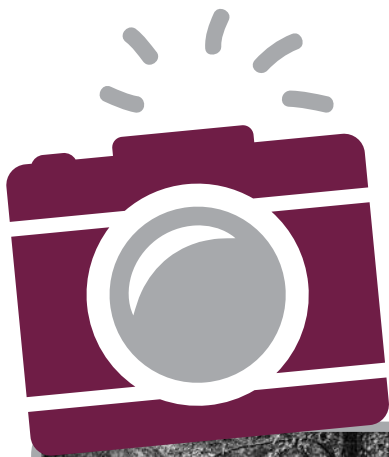
Grant Kersey
Senior, North Gwinnett High School

“What did I get from the program? Honestly: my voice. When I applied to SYL, I was really shy and timid; I had never done anything like this before. I was afraid to even apply for fear of rejection. Even after being accepted into the program, I was terrified to come to the first meeting. Over time my confidence grew because of this program and the people in it. I was encouraged to do things I would have never done by myself, pushing past my limits and discovering this whole new level of myself that I didn’t know of before. My biggest, proudest moment was spontaneously becoming the emcee of the Suwanee Fest Parade. Taking the microphone with no fear made me realize how much I had grown over the past few months.”

Zarah Punjwani
Senior, Peachtree Ridge High School

“One of my favorite experiences in SYL was volunteering at Food Truck Friday, which I helped plan! It was so awesome getting to see something I’d put time and effort into come to fruition and be such a wonderful success! SYL has been different from other leadership programs I’ve participated in because the program affords so much more time and development. At every monthly meeting we discussed the importance of becoming better people and better leaders in order to be a more positive impact on our communities. Everything starts from within; the goal was never to force ourselves to be leaders, but to become leaders.”

Lily Zhang *Senior, North Gwinnett High School*



ANNUAL
SNAP SUWANEE
 PHOTO CONTEST



2016 Winner
Rainy October Morning
 Credit Glen Sharpe



2017 Winner
Water Fun
 Credit Robert Smith



2018 Winner
Biking til the Sun Goes Down
 Credit Eric Rozell

The City of Suwanee is accepting submissions through January 31 for its annual Snap Suwanee photo competition. The annual photography competition provides a means for participants to share images that convey something meaningful about Suwanee and is open to professional and amateur photographers.

The mission of the contest is to celebrate the City of Suwanee; photos entered should be composed of subjects and locations within Suwanee, ideally within the past two years. Judges will select images that best depict Suwanee, and an overall Judges' Choice winner will also be named. Winning photographs will be exhibited for approximately one year at City Hall beginning in March.

Visit **Suwanee.com** for more information and to download an entry form.



Remember that super cool event idea you had?

Suwanee Now Accepting Applications for 2019 Event Calendar

The City of Suwanee is accepting applications for community events to be hosted at City of Suwanee parks during 2019. The deadline for applications is November 28. Once the City's event schedule is approved after the first of the year, no additional events may be added.

Each year, the City of Suwanee hosts – primarily at Town Center Park – over 40 city- and privately-planned events, including concerts, festivals, races, food truck events, and more.

"Events are an important part of community-building in Suwanee," said Events & Outreach Manager Amy Doherty. "Each year, we love partnering with community organizations to bring great music, fun events, and unique engagement opportunities to our residents and others."

Applications and guidelines are available at **suwanee.com**. Application submission does not constitute event approval. Applicants will be contacted regarding their submission by mid-January 2019; selected applicants are expected to attend the mandatory events lunch and learn on January 24, 2019.



“ Love to see a city with a sense of humor and guts to go with it. The backgrounds behind the characters were great. Love all the artwork. Lots of fun to read... compelling... and I'm sure even more so for your residents. Creative and unique approach.
 - Comments from the Savvy Award Judges ”

The City of Suwanee's Annual Report won a 2018 3CMA Savvy Award in the category of Graphic Design - Publications!

The Savvy Awards, held in conjunction with 3CMA's (City-County Communications & Marketing Association) Annual Conference, recognize outstanding local government achievements in communications, public-sector marketing, and citizen-government relationships.

Congratulations!

Officer Jeremy Gatz of the Suwanee Police Department was recently promoted to Corporal.

Congratulations, Corporal Gatz!

OPEN
for
BUSINESS

The following companies received new business licenses from the City of Suwanee in August and September:

- 50 East Shoes**
970 Peachtree Industrial Blvd
- Addictive Math**
960 Scales Rd
- Coinstar**
400 Peachtree Industrial Blvd
- Domino's**
4369 Suwanee Dam Rd

- Empowered Counseling, Inc.**
970 Peachtree Industrial Blvd
- EntirelySkin**
1255 Buford Hwy
- Gim Construction**
970 Peachtree Industrial Blvd
- Heritage Werks**
4110 Tench Rd
- HJ Farm Restaurant**
80 Horizon Dr
- Khan, Sanchez, & Mitchell, LLC**
4411 Suwanee Dam Rd
- Kingsview Asset Management**
425 Buford Hwy
- March for Jesus**
470 Satellite Blvd

- OMG Boutique**
4140 Moore Rd
- Pita Street Food Suwanee**
3186 Lawrenceville-Suwanee Rd
- Ryan Scott Properties**
300 Brogdon Blvd
- Southern Technology Marketing**
970 Peachtree Industrial Blvd
- Skyn, Inc**
1500 Peachtree Industrial Blvd
- Threaded from heaven**
3957 Lawrenceville-Suwanee Rd
- T-Mobile**
991 Peachtree Industrial Blvd

UPCOMINGEVENTS

official newsletter of the city of suwanee, georgia

NOVEMBER18

3	Suwanee Wine Festival	12:00 pm
7	Public Art Commission	6:00 pm
8	City Council Workshop	5:30 pm
10	Winter Farmers Market	9:00 am
11	Suwanee Classic Car Show	10:00 am
12	CITY HALL CLOSED	
13	Harvest Farm Board Meeting	5:00 pm
13	City Council Meeting	6:30 pm
17	Peach State Chili Cookoff	12:00 pm
20	Downtown Development Authority	7:00 am
20	Zoning Board of Appeals	6:30 pm
22	CITY HALL CLOSED	
23	CITY HALL CLOSED	
30	Jolly Holly Day	6:30 pm

DECEMBER18

1	Happy Feat's Jingle in the Park	8:00 am
4	Planning Commission	6:30 pm
5	Public Art Commission	6:00 pm
6	City Council Workshop	5:30 pm
8	Winter Farmers Market	9:00 am
11	Harvest Farm Board Meeting	5:00 pm
18	Downtown Development Authority	7:00 am
18	Zoning Board of Appeals	6:30 pm
18	City Council Meeting	6:30 pm
24	CITY HALL CLOSED	
25	CITY HALL CLOSED	

MAYOR Jimmy Burnette 770/868-7115
COUNCIL Dan Foster 678/404-9641
 Dick Goodman 678/446-7520
 Beth Hilscher 678/546-3388
 Doug Ireland 770/265-0880
 Linnea Miller 678/592-4150

CITY MANAGER Marty Allen 770/945-8996
POLICE CHIEF Mike Jones 770/945-8995
EDITOR Abby Wilkerson 770/945-3386

Unless otherwise noted, City of Suwanee public meetings are at City Hall, 330 Town Center Avenue. Dates subject to change; check suwanee.com for updates.

**CITY OF
SUWANEE,
GEORGIA**