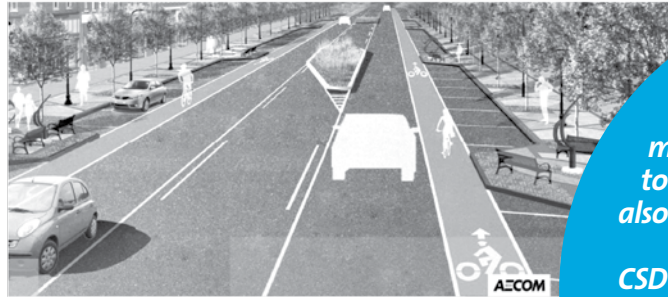


# Suwanee connects

inside  
this issue...

suwanee.com | june 2017

## Let's Build a Better Buford Highway



*Context Sensitive Design (CSD) is a transportation term meaning that the road is intended to serve transportation needs while also balancing its impact on the overall community. A common goal of CSD projects is to develop a facility that is harmonious with the community, and preserves aesthetics, history, and environmental resources, while integrating these innovative approaches with traditional transportation goals for safety and performance.*

Suwanee's portion of Buford Highway is a relatively nondescript, typical state road: a simple two lane road that primarily carrying local traffic through the middle of the city, it passes by parks, businesses, and homes along its way through historic Old Town Suwanee, beside Town Center and George Pierce Park.

Studies indicate that Buford Highway serves Suwanee's residents as a local, rather than a commuter road. Both north and south of the city, Buford Highway has a starkly different character: widened to four or more vehicular lanes, it serves vehicular travel reasonably well, but is daunting for pedestrians and bikers.

In 2007, the city began collecting citizen input for the Downtown Suwanee Master Plan – a comprehensive land use and transportation study of the downtown area. Participating residents and business owners expressed the sentiment that while they wanted transportation improvements to Buford Highway, they also wanted them to be provided in a sensitive manner that didn't further divide the city and didn't transform the road into yet another higher-speed thoroughfare.

Armed with this information, the city hired a team of transportation experts to evaluate different options for the road; options that prioritized a community road over a commuter road. The resulting plan suggested a new Buford Highway, based on proven Context Sensitive Design principals: a road that would transport vehicles, but also serve pedestrians and bicyclists; a road that would set the stage for on-street commerce and small-scale shopping; and a safe road that would better protect park visitors. That new, better Buford Highway is finally on its way.

continued on page 9



2 The Orchard at White Street Park



4 2017-19 SculptTour Exhibit



7 Spin Doctors Headline August Concert

# Nourishment for the *Mind, Body, & Soul*

## The Orchard at White Street Park Nears Completion

The City of Suwanee and Harvest Farm have collaborated to develop the first public orchard and playground in the Southeast. Featuring a fully functional orchard that will be open to the community, the Orchard at White Street Park was designed to provide families with a fun and engaging space that changes through the seasons, encourages creative and outdoor play, and grows fresh fruit.

In addition to trees yielding fruit, the Orchard at White Street Park also includes lawn areas for relaxation and play, a pavilion, winding pathways, and natural children's play features throughout the one-acre site.

*“The orchard was designed to incorporate fruiting plants, winding paths, lawns, and natural play features. It will be a unique and exceptional space for discovery and exploration and offer hands-on learning opportunities.”*

“The orchard was designed to incorporate fruiting plants, winding paths, lawns, and natural play features. It will be a unique and exceptional space for discovery and exploration and offer hands-on learning opportunities with a wide variety of fruiting plants,” said Harvest Farm board member and orchard landscape architect Roger Grant. “The park will be open to the public, and people of all ages are encouraged to observe and enjoy the fruits of our labor. It will be maintained using organic pest control methods, meaning the fruit may not look like what we see at the grocery store, but patrons will get an authentic and safe experience.”

The orchard will serve as the perfect complement to Harvest Farm, Suwanee’s award-winning community garden, which is also located at White Street Park. Opened in 2010, Harvest Farm was the first community garden in Gwinnett County and remains one of the largest organic community



**The hand water pump** serves multiple purposes: centrally located to provide a fruit washing station, it will be accessible to natural play elements to provide for water play. It is designed for children’s safety and ease of use.



**Orchard trails** are composed of crushed terracotta pipe, recycled from a local supplier. A major feature of the orchard is a large mound with two embankment slides.





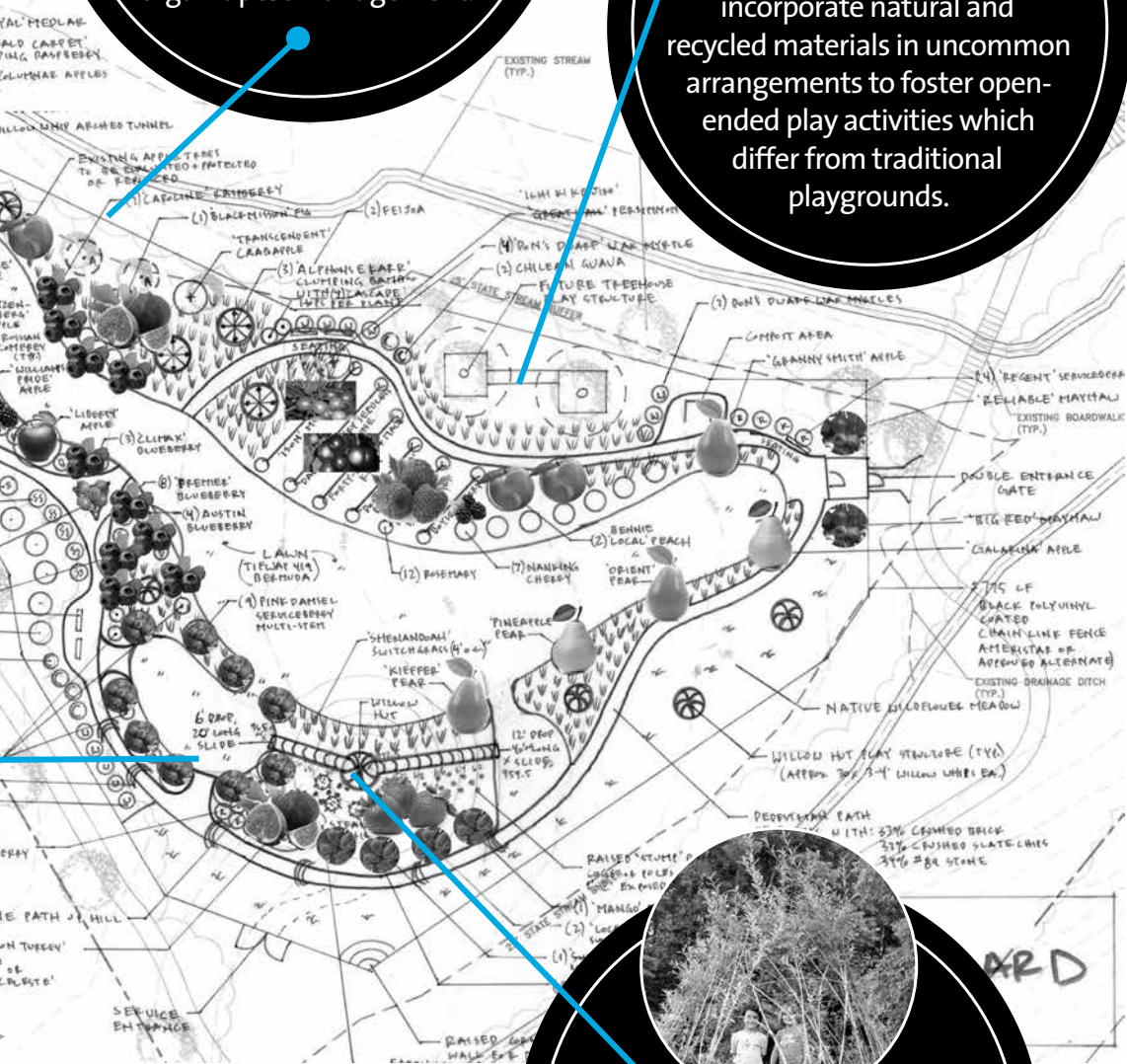


**The Purple Martin houses** will be a part of the orchard's comprehensive approach to organic pest management.



**Playground areas** will incorporate natural and recycled materials in uncommon arrangements to foster open-ended play activities which differ from traditional playgrounds.

**Visit [Suwanee.com](http://Suwanee.com) to learn how you can get involved at the orchard!**



**Willow huts** provide a fun and unique play element. As natural and living enclosures, they will change through the seasons and grow over time.

gardens in the southeastern United States.

While the orchard itself is already open to the public, the space will continue to be planted over the next few months, largely by community volunteers. A volunteer organization will also maintain the property, with plantings based on donations received.

“We’re excited to keep building on the success and momentum of the garden by expanding into White Street Park with this orchard,” said Grant. “While the City has provided a solid foundation, the ultimate success of the orchard lies with our citizens – we need the community’s support in our effort to raise money to purchase orchard plantings.”

“With your help, we will make a lasting impact in the lives of our neighbors and families by creating a special and unique space for all of Suwanee.”

# Suwanee SCULPTOUR

## Eighteen or so prominent new residents have moved to Suwanee!

The fifth installment of the city's popular SculptTour temporary sculpture exhibition has been recently installed around Town Center Park. Since 2011, the award-winning SculptTour program has brought 79 sculptures to a walkable one-mile area of downtown Suwanee, not to mention the 11 pieces in the city's permanent collection. Currently, each round of SculptTour lasts approximately twenty-two months.

---

*“There are multiple reasons that I continuously participate in Suwanee SculptTour: the quality of the show and location, lease stipend, potential sales, and working with great people – specifically, Toni and the public works guys.”*

*– Artist Gregory Johnson*

---

A program of the Suwanee Public Arts Commission, SculptTour is funded through corporate and private donations. Major funding for the 2017-19 exhibit was provided by:



Chandler, Britt & Jay LLC • Clark Patterson Lee  
Peoples Bank & Trust • Quantum National Bank

## *The Unsung Heroes of Public Art*

From selecting the art to planning the logistics, installations to de-installations: it takes a village to bring a score of unique, beautiful public art pieces to Suwanee every two years. While many people put in the hours to make each SculptTour exhibit happen, there are a few warriors at City Hall who devote weeks and months to the cause, and whom seldom receive public recognition for their efforts – and without whom “the show” would decidedly not go on.

### **Toni Shrewsbury**

NOVEMBER – that’s when special projects coordinator Toni Shrewsbury begins working on the May installation of the new SculptTour exhibit. She spends roughly six months writing and distributing the RFP, managing the 50-80 submissions, serving as the liaison between the artists and the Public Art Commission, making sure the art bases are refurbished, and scheduling and managing each and every installation and de-installation.

“Toni’s relationships with the artists is a big reason why so many continue to submit their pieces and want to work with Suwanee,” said Suwanee Assistant City Manager Denise Brinson. “Most art installations are done one at a time – we do 18 within a week. Toni handles the logistics seamlessly.”

The only thing Toni can’t do? Actually install the art. Enter...

### **The Public Works Department**

The muscles *and* brains behind the operation – the installers lifted and moved over 11,000 lbs. of art this installation alone – Suwanee’s public works department goes above and beyond in providing assistance to the artists.

“They’re a big part of the reason that we get the quality of art that we do. Many cities purchase the art and leave the artist to the installation. Public works prepares the art bases ahead of time, and is there every step of the installation, offering assistance where needed,” said Shrewsbury.

Pouring cement, welding, drilling, and everything in between; no matter how large the art or how odd the install process, we’ve only ever heard them say one thing: “We’ll make it happen.”





LOVE by Jonathan Bowling



His n Hers by Gregory Johnson



Lifecycle by Hanna Jubren



Magnolia Bluff  
by Aaron P. Hussey



When the Stars Begin to  
Fall by Charlie Brouwer

You'll Shoot Your  
Eye Out by Joni  
Younkins-Herzog



Dancer XX by Jack Howard-Potter



Friends by Nnamdi Okonkwo



Titanosaurus by Carlos Davila



Stand Here  
by Jim Collins



Woman with Child  
by Michael Russell



Shape Shifters by Coral Penelope Lambert



Enders Enigma by Davis Andrew Whitfield IV



Saltair by Kevin Eichner



Fighting for Alpha  
by Todd Frahm



Mr. Eggwards  
by Kimber Fiebiger



Threshold  
by Gregory Johnson



Swinging II  
by Jack Howard-Potter

# Can You Feel the LOVE Tonight?

11th annual Broadway in the Park live performances featuring *The Lion King JR.* and *Madagascar - A Musical Adventure JR.*

Musical theatre returns to Town Center Park again this summer with Suwanee Performing Arts' Broadway in the Park presentation of *Disney's The Lion King JR.* and opening act *Madagascar - A Musical Adventure JR.* on July 28 and July 29.

Broadway in the Park is the Suwanee Performing Arts' signature summer production performed in the park each July. The Town Center amphitheater is transformed into a Broadway-style stage with professional lighting, sound, costumes, sets, and our community's most talented high school, middle school, and home school students.

Patty Etherton and Berneta Bock Davis, co-owners of Suwanee Academy of the Arts and co-founders of Suwanee Performing Arts, have been dreaming of bringing *The Lion King* to the outdoor stage in Suwanee for years.

"This show is perfect for an outdoor venue," says Etherton. "You are not limited by the size of the theater's walls, or the size of the stage for that matter. The sky is literally the limit in designing costumes and sets when you perform in an outdoor venue."

Consulting with volunteers from the Center for Puppetry Arts, Suwanee Performing Arts will

create spectacular, larger-than-life characters certain to enchant audiences of all ages and walks of life.

"It's my responsibility to "wow" my audience," says Artistic Director Davis. "With these shows we are limited only by our imagination in what we can deliver – from trampolines to acro-silks to stilts. And absolutely everyone knows and loves the music. I am really looking forward to the electrifying energy that these shows are bound to generate among the audience."

This is Suwanee Performing Arts' 11th summer of Broadway in the Park performances. Past shows have included *Cinderella*, *Shrek the Musical*, *Hairspray*, *Chitty, Chitty, Bang, Bang*, and *High School Musical*.

The rain-or-shine performances draw approximately 4,000 people per show. Performances begin at 7 p.m. Admission is free, but you should plan to arrive early to claim seats on the lawn and dine at local restaurants. Reserved premium seating, tables for sponsors, or general admission seating near the front of the stage is available. Contact Suwanee Performing Arts at [info@suwaneeperforms.com](mailto:info@suwaneeperforms.com) or 678-482-6333.

Based on the much-loved animated classic, *The Lion King JR.* tells the story of the epic adventures of a curious cub named Simba (Kaden Waters as young Simba and Ryan Cruz as adult Simba) as he struggles to accept the responsibilities of adulthood and his destiny as king. Along the way, the young lion encounters a colorful cast of characters including spunky lioness Nala (Maci Simmons as young Nala and Hannah Miller as adult Nala), charismatic meerkat Timon (Jackson Baughman), and loveable warthog Pumbaa (William Millhouse). To claim his rightful place on the throne and save the Pridelands, Simba must find his inner strength and confront his wicked Uncle Scar (Christopher Miller). *The Lion King JR.* features classic songs from the 1994 film such as "Hakuna Matata" and the Academy Award®-winning "Can You Feel the Love Tonight" as well as additional songs penned for the Broadway production.

***Madagascar - A Musical Adventure JR.*** is based on the DreamWorks animated motion picture and follows all of your favorite crack-a-lackin' friends as they escape from their home in New York's Central Park Zoo and find themselves on an unexpected journey to the madcap world of King Julien's Madagascar. Alex the lion (played by Victor Alcoreza) is the king of the urban jungle, the main attraction at the zoo. He and his best friends – Marty the zebra (Marin Shappert), Melman the giraffe (Rachel Spooner), and Gloria the hippo (Anderson Cheek) – have spent their whole lives in blissful captivity before an admiring public and with regular meals provided for them. Not content to leave well enough alone, Marty lets his curiosity get the better of him and makes his escape – with the help of some prodigious penguins – to explore the world. This show is filled with outlandish characters, adventure, and an upbeat score that is sure to leave audiences with no choice but to "Move It, Move It!"







**IF YOU WANT TO COME TO AUGUST CONCERT, JUST GO AHEAD NOW**

Featuring all four original band members, the Spin Doctors will bring their unique 90s sound to Suwanee as they headline the annual August Concert & Wing Festival on Saturday, August 12 at 5 p.m. in Town Center Park.

The Spin Doctors' debut studio album, *Pocket Full of Kryptonite*, released in August 1991 featuring their top singles "Two Princes" and "Little Miss Can't Be Wrong." The band was nominated for a 'Favorite Pop/Rock Album' American Music Award in 1994 for the album and a Grammy in 1994 for 'Best Rock Performance by a Duo or Group with Vocal' for "Two Princes."

Suwanee's free August Concert & Wing Festival will feature opening bands starting at 5 p.m., all leading up to the Spin Doctors taking the stage at 8 p.m.

**Spin Doctors  
Headline  
Suwanee's  
August Concert  
& Wing Fest**

"[Their] popularity is based on universal rock and roll virtues. The Doctors aren't trying to blaze new trails. They know we've been down this way with the Stones, Curtis Mayfield, and a few of their other touchstones. But the proof—plenty of it—is in the party."

- Rolling Stone

## **Get Ready to "Move It, Move It!" at the Broadway in the Park 5k & Fun Run**

Suwanee Performing Arts (SPA) will sponsor the first Broadway in the Park 5k & Fun Run on Saturday, July 22 at Town Center Park. This event will serve as a fundraiser for the performance groups supported by SPA (Suwanee Ballet, Sounds of Suwanee, Community Art Players, and The Actor's Company), as well as the community kickoff for a week of show preparation on the stage in Town Center Park.

Participants in the 5k and Fun Run will be greeted by characters from the upcoming Broadway in the Park shows, and are encouraged to embrace the spirit of those shows by dressing in costumes inspired by *The Lion King* and *Madagascar*. In addition to the conventional race awards, prizes will be awarded for the Best Dressed Lion, the Best Roar, and Best Performance of "Hakuna Matata," among other categories. Racers may register at Big Peach Running Co. in Suwanee Town Center or at [SuwaneePerformingArts.org](http://SuwaneePerformingArts.org).

# As You Wish

## Suwanee Announces 2017 Movies Under the Stars Line-up

JUN  
3

### 7 p.m. – *The Secret Life of Pets*

Max is a spoiled terrier who enjoys a comfortable life in a New York City high-rise until his owner adopts Duke, a giant and unruly canine. During their walk outside,

they encounter a group of ferocious alley cats and wind up in a truck bound for the pound. Luckily, a rebellious bunny named Snowball swoops in to save the doggy duo from captivity.

In exchange, Snowball demands that Max and Duke join his gang of abandoned pets on a mission against the humans who've wronged them.



### 8:45 p.m. – *Star Wars: Rogue One*

Former scientist Galen Erso lives on a farm with his wife and young daughter Jyn. His peaceful existence comes crashing down when the evil Orson Krennic takes him away from his beloved family. Many years later, Galen is now the lead engineer for the most powerful weapon in the galaxy: the Death Star. Knowing that her father holds the key to its destruction, a vengeful Jyn joins forces with a spy and other resistance fighters to steal the space station's plans for the Rebel Alliance. From a little movie series called *Star Wars* – you may have heard of it.



JUL  
22

### 7 p.m. – *The Lego Batman Movie*

There are big changes brewing in Gotham, but if Batman wants to save the city from the Joker's hostile takeover, he may have to drop the lone vigilante thing, try to work with others and maybe, just maybe, learn to lighten up. Perhaps his superhero sidekick Robin and loyal butler Alfred can show him a thing or two.

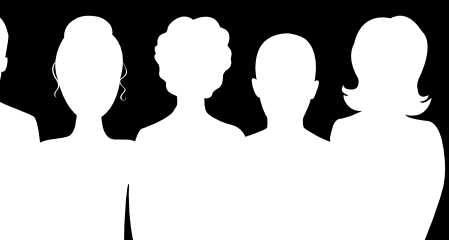
### 8:45 p.m. – *Captain America: Civil War*

Political pressure mounts to install a system of accountability when the actions of the Avengers lead to collateral damage. The new status quo deeply divides members of the team. Captain America believes superheroes should remain free to defend humanity without government interference. Iron Man sharply disagrees and supports oversight. As the debate escalates into an all-out feud, Black Widow and Hawkeye must pick a side.





Movies Under the Stars is bringing double features to Town Center Park this summer. Upcoming movie nights on June 3, July 22, and August 19 will feature films appropriate for young children on a digital board at 7 p.m. and movie selections for slightly older audiences on a big screen beginning around 8:45 p.m.



**AUG  
19**

**7 p.m. –  
Trolls**

After an invasion of Troll Village, Poppy - the happiest Troll ever born - and the overly-cautious, curmudgeonly Branch set off on a journey to rescue her friends. Their mission is full of adventure and mishaps, as this mismatched duo try to tolerate each other long enough to get the job done.



**8:45 p.m. – The Princess Bride**

“Hello. My name is Inigo Montoya. You killed my father. Prepare to die.”  
 “Have fun stormin’ da castle.” “Mawage is wot bwings us togeder tooday.”  
 “Rubbish. Filth. Slime. Muck. Boo. Boo. Boo.” Do we really have to provide the synopsis for arguably the world’s most quotable movie?  
 “INCONCEIVABLE!”



*Let’s Build a Better Buford Highway*  
 continued from page 1

Extending from McGinnis Ferry Road to George Pierce Park, Buford Highway will remain a two-lane road, but with two distinct design themes: a rural/suburban section and a town center/urban section. The Better Buford Highway will include:

- › A 10-foot wide greenway/bikeway on the east side of the roadway between McGinnis Ferry Road and Russell Street,
- › A traffic-calming roundabout at Russell Street,
- › 10-foot wide sidewalks, on-street parallel parking, dedicated bike lanes, street trees, benches, and pedestrian scale lighting along the majority of both sides,
- › Landscaped medians and center turn lanes at various locations,
- › Minimized curb cuts and travel lanes reduced in width to help moderate vehicular speeds and increase safety.

The end result will be a better road that will handle a similar volume of traffic as today, but in a safer manner. Pedestrians will be able to walk more comfortably along the road from Town Center to Old Town, and crossing Buford Highway will become much easier and safer.

This is a joint project between the city and Georgia DOT. Grant funding, largely from the Atlanta Regional Commission, will pay for about half of the \$11 million project. Construction is expected to begin in Fall of 2017 and end the first quarter of 2019. While Buford Highway is expected to remain open for the majority of construction, there will be inevitable construction delays.

Over the next few issues of *Connects*, professionals will be discussing various parts of the Better Buford Highway project. In the meantime, visit [www.suwanee.com](http://www.suwanee.com) for more information as the project progresses.



## Suwanee Fest: Community at Work

It's tremendously fitting that the designer of the Suwanee Fest: Community at Work logo should just happen to also be an architect.

In mid-February, the City of Suwanee issued an open call for designers, artists, and creative people of all ages, amateur to professional, to submit logo designs for Suwanee Fest. Jacob Miramontes' design was chosen out of dozens of submissions as the official logo for Suwanee Fest 2017. The logo will be featured in Suwanee Fest marketing materials and on t-shirts worn by volunteers throughout the September 16 and 17 festival. The logoed shirts also will be available for purchase at Suwanee Fest.

"This year's theme made me relate community unification to a building construction process," said Miramontes. "Like a building, a community needs to be based on a strong foundation and be raised with all of its elements working together. The smallest element is as important as the largest, and each particular difference is what makes structures and communities solid and unwavering."

Miramontes is a Mexican architect who has been living in Georgia since 2015. His graphic design skills have evolved through necessity, learning the craft to improve his project presentations at work. He has since worked on corporate logo designs for multiple organizations throughout the U.S. and Mexico, as well as dabbling in social media marketing for a few Mexican bars and restaurants.

"Suwanee was my first home in the United States after work brought me here two years ago. I lived there for almost a year and I met the warmest and kindest people. Being far from home is not easy, but Suwanee made me feel welcomed since the very first day and I made a lot of memories there."



## GET 'FRESH' AT THE



SUWANEE  
**Farmers**  
*market*

SATURDAYS • 8 AM-NOON  
TOWN CENTER PARK



The City of Suwanee is updating its Comprehensive Plan. This city-wide plan is an important tool for guiding future decisions about where and how to manage population growth and development. Take the online survey to share your thoughts about the future of Suwanee as we plan for the next 20 years: [suwanee2040plan.com](http://suwanee2040plan.com)



# Welcome to City Hall

New officer **Todd Pacholke** joined the Suwanee Police Department on May 8. A certified police officer, Pacholke spent several years with the CSX Railroad as an officer and has over 20 years of experience. Originally from Ohio, he now resides in Suwanee with his wife and daughter.

Second year University of Georgia MPA student **Stephen Jacques** joins us this summer as an intern to the City Manager's office.

## Congratulations!

The Suwanee Police Department is pleased to announce the promotion of **Dustin Devereaux** to Police Corporal.

**Keith Kerr** has transferred from the police department to City Hall, serving as the city's new building inspector.

The City of Suwanee was recently named **#4 on the list of Best Suburbs to Live in in Georgia** by Niche.com! The organization used data from the U.S. Census, Department of Education, and FBI, as well as citizen reviews to determine its rankings.

Have you HERD about  
our awesome new Suwanee  
summer gear?

Available at the Welcome Center  
3930 Charleston Market Street | Town Center  
*Located at the North Gwinnett Arts Association*



## connections

Open

for business

The following companies received new business licenses from the City of Suwanee in March and April:

- **Arts of India by Unique Touch**  
50 Old Peachtree Road
- **Bilgah Moka Salon**  
1500 Peachtree Industrial Boulevard
- **Blue Frog Construction LLC** 3011 Sutton Gate Drive
- **Cetec, Inc.** 1039 Industrial Court
- **Chipotle Mexican Grill**  
3186 Lawrenceville-Suwanee Road
- **Conveyant Systems, Inc.** 530 Highland Station Dr.
- **Design Tex Cabinetry** 405 Sharon Ind Way
- **DoReMi Music** 302 Satellite Boulevard
- **Douglas Services LLC**  
4000 Smithtown Road
- **Eagle Instruments, Inc.**  
1039 Industrial Court
- **Elite Sports** 300 Shawnee North Drive
- **Georgia Mechanical, Inc.** 4189 Capital View Drive
- **Glamorous Lash Lounge**  
1500 Peachtree Industrial Boulevard
- **Harmony Hair Salon**  
1500 Peachtree Industrial Boulevard
- **Iron Guys Quality Korean BBQ**  
2850 Lawrenceville-Suwanee Road
- **Le Studio** 302 Satellite Boulevard
- **Max Automation North America, Inc.**  
130 Satellite Boulevard
- **Milan Eye Center**  
1300 Peachtree Industrial Boulevard
- **MME Testing**  
1039 Industrial Court
- **Nail Studio by ATL**  
2870 Lawrenceville-Suwanee Road
- **Norman H. Smith, CPA, PC**  
3461 Lawrenceville-Suwanee Road
- **Poza Rica Tequila Bar & Mexican Grill**  
3463 Lawrenceville-Suwanee Road
- **Salon Imperial** 1500 Peachtree Industrial Blvd
- **Southern Wall Systems II, LC**  
3405 Martin Farm Road
- **Suwanee Happy Chiropractic**  
686 Peachtree Industrial Boulevard
- **Suwanee Primary Care**  
1120 Peachtree Industrial Boulevard
- **Suwanee Wood Products** 6 Highway 23
- **T-Link** 1275 Buford Highway
- **Team Xtreme Auto Brokers**  
4411 Suwanee Dam Road
- **The Camp Transformation Center**  
3255 Lawrenceville-Suwanee Road
- **Verizon Wireless** 3186 Lawrenceville-Suwanee Rd
- **Vactec Systems LLC** 130 Satellite Boulevard
- **Your Serve Tennis**  
1000 Peachtree Industrial Boulevard

## upcoming events

official newsletter of the city of suwanee, georgia

### J June

- 2 Food Truck Friday 5:30p.m.
- 3 Farmers Market 8:00a.m.
- 3 Movies Under the Stars 7:00p.m.
- 6 Solis Town Center Project Open House 5:00p.m.
- 7 Public Arts Commission 6:00p.m.
- 10 Farmers Market 8:00a.m.
- 12 Suwanee Fest Planning Committee 6:30p.m.
- 13 Harvest Farm Board Meeting 5:00p.m.
- 15 City Council Workshop 5:30p.m.
- 15 FY2018 Budget Public Hearing 5:30p.m.
- 17 Farmers Market 8:00a.m.
- 20 Downtown Development Authority 7:30a.m.
- 20 Zoning Board of Appeals 6:30p.m.
- 24 Farmers Market 8:00a.m.
- 27 FY2018 Budget Public Hearing 6:30p.m.
- 27 City Council Meeting 6:30p.m.

### J July

- 1 Farmers Market 8:00a.m.
- 5 Public Arts Commission Meeting 6:00p.m.
- 8 Farmers Market 8:00a.m.
- 10 Suwanee Fest Planning Committee 6:30p.m.
- 11 Harvest Farm Board Meeting 5:00p.m.
- 11 Planning Commission Meeting 6:30p.m.
- 13 City Council Workshop 5:30p.m.
- 15 Farmers Market 8:00a.m.
- 18 Downtown Development Authority 7:30a.m.
- 18 Zoning Board of Appeals 6:30p.m.
- 20 2040 Comp Plan Open House 4:30p.m.
- 22 Broadway in the Park 5K & Fun Run 7:00a.m.
- 22 Farmers Market 8:00a.m.
- 22 Movies Under the Stars 7:00p.m.
- 25 City Council Meeting 6:30p.m.
- 28 Broadway in the Park 7:00p.m.
- 29 Farmers Market 8:00a.m.
- 29 Broadway in the Park 7:00p.m.

City of  
Suwanee  
Georgia

**MAYOR** Jimmy Burnette 770/945-3492  
**COUNCIL** Dan Foster 678/404-9641  
 Dick Goodman 678/446-7520  
 Beth Hilscher 678/546-3388  
 Doug Ireland 770/265-0880  
 Linnea Miller 678/592-4150

**CITY MANAGER** Marty Allen 770/945-8996  
**POLICE CHIEF** Mike Jones 770/945-8995  
**EDITOR** Abby Wilkerson 770/945-3386

Unless otherwise noted, City of Suwanee public meetings are at City Hall, 330 Town Center Avenue.  
 Dates subject to change; check [suwanee.com](http://suwanee.com) for updates.