

# Suwanee connects

inside  
this issue...

suwanee.com | november 2016

## Like Riding a Bicycle Suwanee Unveils Gwinnett County's First Bike Share Program

An exciting new transportation option has come to Suwanee! The City of Suwanee unveiled its new bike share program on Saturday, October 22 at Town Center Park, allowing residents and visitors alike to enjoy all that our city has to offer from atop two wheels.

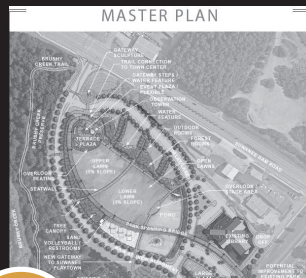
Sponsored by CIGNA and Children's Healthcare of Atlanta, bike station structures – equipped with self-sustaining internal energy sources – have been installed at Suwanee Creek Park and Town Center Park which will each house up to eight bikes. Bikes may be rented for up to three hours for free, and at a cost of \$3 per additional hour; the maximum fee for all day use of a bike is \$30. All riders must be at least 18 years old and provide their own helmets.



"Children's Healthcare of Atlanta is pleased to be a part of this wonderful recreation opportunity in Suwanee," said CHOA Community Development Officer Annie Valenty. "As an organization dedicated to health and wellness, we believe in programs that encourage families to be active. This bike program will undoubtedly foster the importance of regular family recreation to all in the community."

Bikes can be easily rented via smart phone app. Signage explaining the use of the bike share program will be placed at each station to orient new users to the system. In addition, those interested can visit [zagster.com/suwanee](http://zagster.com/suwanee) for answers to questions such as usage, fees, station location, etc. Bikes and stations will be maintained by Zagster, the leading provider of bike share programs for cities, universities, businesses and properties. Bikes and stations will be maintained by Zagster, the leading provider of bike share programs for cities, universities, businesses, and properties. The Zagster system is currently being used in the City of Alpharetta, Town Center CID, and City of Smyrna, to name a few.

"We are excited to sponsor the very first bike share program in Gwinnett County!" said Scott Kennedy, Director of Client Management at CIGNA. "This additional recreation option will encourage further use of the amazing greenway, trail system, and parks that Suwanee has to offer."



2 Future Park  
Master Plan



5 Ho Ho Ho!



6 Working  
Together  
for a Safer  
Suwanee

# Approves New Park Master Plan

The Suwanee City Council unanimously approved a master plan for a future city park at their September 27 meeting. Located on approximately 25-acres known locally as the DeLay Property, the site is situated behind the Suwanee library and PlayTown Suwanee on Suwanee Dam Road.

“One of the big ideas that came out of last year’s Downtown Master Plan was the expansion of Suwanee Town Center. The first step toward that vision was the development of a long-term master plan,” said Suwanee City Manager Marty Allen. “Town Center Park is programmed with events most weekends of the spring and fall, and much of the summer as well. This potential new, unstructured space would allow for more community utilization.”

The property was purchased in 2002 as an early acquisition of the community-driven comprehensive park and open space initiative. When Town Center Park was first envisioned, the population of Suwanee was approximately 9,000 people – roughly half of where it stands currently.

“The success of Town Center Park has exceeded all expectations,” said Suwanee Mayor Jimmy Burnette. “The park draws over 200,000 visitors annually to events, as well as regularly serving our 18,000 citizens. The new park will help ease the demand on the existing park and surrounding community.”

The new park design is influenced by the style and quality of Town Center Park, but is by no means a replica, and will have its own unique character, personality, and purpose. Plans call for an accentuated pedestrian connection by reworking City Hall Park into a visible, logical linkage of the two sites. The topography of the park will allow it to overlook Town Center, further enhancing the relationship of the two spaces.

The majority of the site – roughly 15 of the wooded 25 acres along the existing Brushy Creek Greenway – would remain undisturbed.

The park plan features a mixture of urban and rural environments, including:

- A roughly 900-foot, elevated **signature bridge** for pedestrian and bicycle use, spanning the entire park and crossing an approximately one-acre water feature.
- An open **terrace plaza** and lawn area at the peak of the park’s elevation that will include several small-scale micro-business sites serving park patrons.
- An extension of the existing **PlayTown Suwanee** geared toward older children, expanding the age range of PlayTown Suwanee without interfering with its existing success.
- Sandpit **volleyball** courts.
- An iconic **public art** piece.

The biggest change this area will see is the realignment of Main Street, which will shift around the park and exit onto Suwanee Dam Road at the existing traffic signal at the library entrance. This shift will allow the median break at the existing Main Street to close, greatly improving the safety and traffic flow on Suwanee Dam.

Over the last few months, the City of Suwanee has worked with a team of professionals and sought input from community members via stakeholder interviews, over 1,000 in-person and online surveys of park users, four planning workshops, two design charrettes, and a variety of other meetings and presentations.

“The support for expanding Town Center Park has been overwhelming,” said Burnette. “Concepts were developed and refined through this process with the needs and wants of all stakeholders in mind. The community input led to a design that maximizes the opportunities of the site and provides diverse experiences.”

The anticipated cost associated with the future park is roughly \$12-15 million as envisioned; a timetable for construction has not been established.

**“The new park will help ease the demand on the existing park and surrounding community.”**

– Jimmy Burnette, Suwanee Mayor

# MASTER PLAN



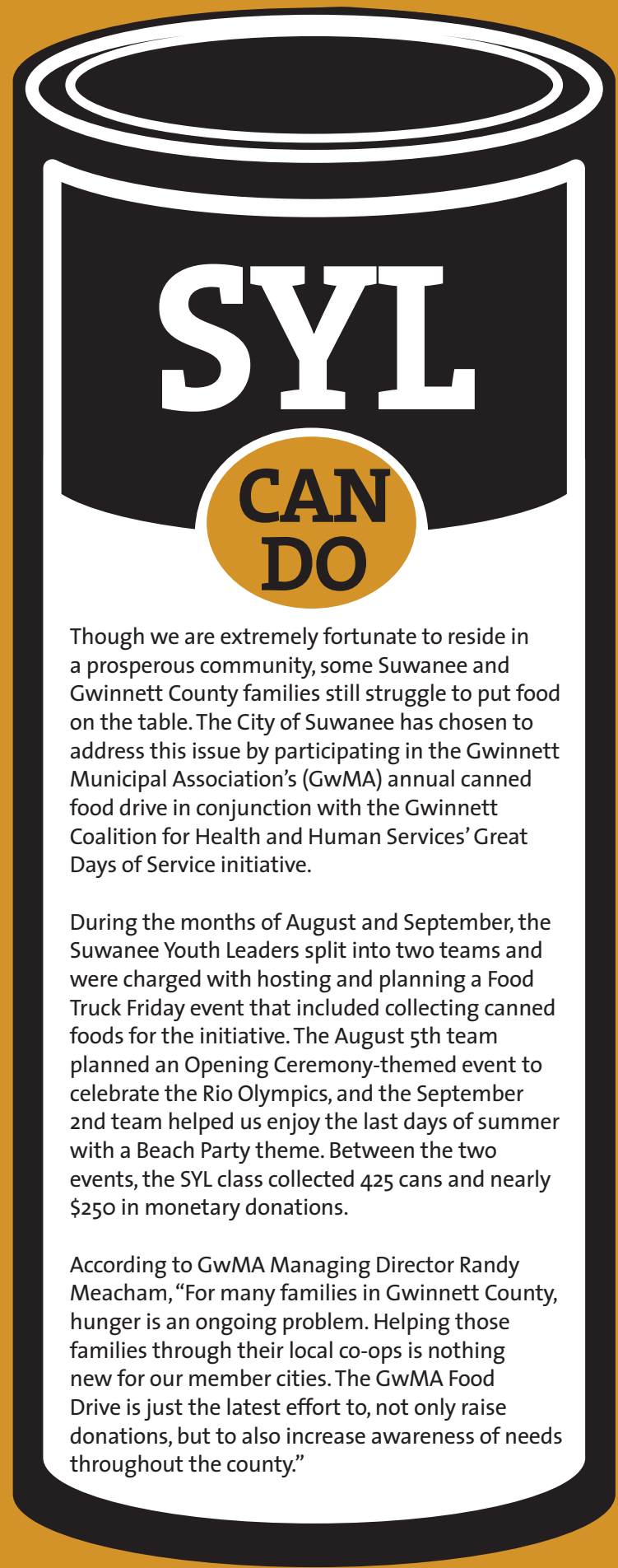
# If Not You, Then Who? City Now Accepting Applications for Suwanee Youth Leaders Class of 2017

Applications for the 2017 Suwanee Youth Leaders (SYL) program, an eight-month City of Suwanee leadership program for high school sophomores and juniors, are being accepted through December 2. Applications are available through schools and at [suwanee.com](http://suwanee.com).

Now in its fourth year, the award-winning SYL program is open to students who live in the North Gwinnett, Peachtree Ridge, and Collins Hill school clusters, as well as home school and private school students who reside in the City of Suwanee. The program centers on civic involvement, leadership skills, and volunteer opportunities.

The 2017 SYL program will kick off with a mandatory two-day retreat in February. Students will then meet one Saturday each month March through September and also will be expected to volunteer at several community events, which may include the August Concert, two Food Truck Friday events, Suwanee Fest, and Arts in the Park.

For more information about SYL, contact Adam Edge at [aedge@suwanee.com](mailto:aedge@suwanee.com) or Denise Brinson at [denise@suwanee.com](mailto:denise@suwanee.com).



Though we are extremely fortunate to reside in a prosperous community, some Suwanee and Gwinnett County families still struggle to put food on the table. The City of Suwanee has chosen to address this issue by participating in the Gwinnett Municipal Association's (GwMA) annual canned food drive in conjunction with the Gwinnett Coalition for Health and Human Services' Great Days of Service initiative.

During the months of August and September, the Suwanee Youth Leaders split into two teams and were charged with hosting and planning a Food Truck Friday event that included collecting canned foods for the initiative. The August 5th team planned an Opening Ceremony-themed event to celebrate the Rio Olympics, and the September 2nd team helped us enjoy the last days of summer with a Beach Party theme. Between the two events, the SYL class collected 425 cans and nearly \$250 in monetary donations.

According to GwMA Managing Director Randy Meacham, "For many families in Gwinnett County, hunger is an ongoing problem. Helping those families through their local co-ops is nothing new for our member cities. The GwMA Food Drive is just the latest effort to, not only raise donations, but to also increase awareness of needs throughout the county."

# 'Tis the Season in Suwanee!

You'd better watch out, and you'd better not cry – Santa Claus is coming to town on Friday, December 2 at 6:30 p.m. for the City of Suwanee's annual Jolly Holly Day celebration at Town Center Park! Santa will light Suwanee's Christmas tree, listen to wishes, and take photos with all the good girls and boys.

Choruses from Level Creek, Riverside, Roberts, Burnette, Parsons, and Suwanee elementary schools will perform some of the season's favorite tunes, while performers from Sounds of Suwanee and Royal Dance Academy also will serve up some jammin' jingles.

Santa Claus will magically arrive at the beginning of the holiday event and then will meet with children and families while performances continue onstage. Parents, be sure to bring cameras or phones to snap your own complimentary photos.

Free hot chocolate, cookies, s'mores, and holiday crafts will be available while supplies last.



## Make 2017 More EVENTful

The City of Suwanee is currently accepting event applications for community events to be hosted at City of Suwanee parks during 2017. The deadline for applications is December 9. Once the City's event schedule is approved after the first of the year, no additional events may be added.

Each year, the City of Suwanee hosts – primarily at Town Center Park – more than 40 city and privately planned events, including concerts, festivals, races, food truck events, and more.

“Events are an important part of community-building in Suwanee,” said Events & Outreach Manager Amy Doherty. “Each year, we love partnering with community organizations to bring great music, fun events, and unique engagement opportunities to our residents and others.”

Applications and guidelines are available on the What's New/Events page at [suwanee.com](http://suwanee.com). Application submission does not constitute event approval.

# Working Together for a Safer Suwanee

“To protect and serve” – officers of the Suwanee Police Department truly embrace this motto and take seriously its promise. The Suwanee PD also strongly embraces the philosophy of community policing – a partnership in which the police and the community share responsibility for identifying, reducing, eliminating, and preventing problems that impact community safety and order.



“By working in tandem, the police and citizens can reduce the fear and incidence of crime while also improving the quality of life in our community,” said Suwanee Police Chief Mike Jones. “Community policing emphasizes the law enforcement’s adaptation from a reactive, incident-driven bureaucracy to a more proactive, partnership-oriented approach to address public safety concerns.”

The community policing era in the United States began in the 1980s, a time of heightened police distrust and fear of crime.

The idea derived from the “Broken Windows” theory, which suggested that a police officer would ignore a broken window because it does not break a law; however, a community-oriented police officer would recognize a broken window as a sign of social disorganization.

Studies have shown that the overall assessment of community-oriented policing is positive, as both officers and community members attest to its effectiveness in reducing crime and raising the sense of security in a community.

“Community policing recognizes that police cannot solve every public safety problem alone, so interactive partnerships are created,” said Jones. “We have had a great deal of success with this philosophy, including solving multiple crimes this summer through tips received via messages posted on social media.” “The Suwanee Police Department and its citizens work together to build trust and valuable relationships,” said Jones.

Community policing methods serve as the overarching, guiding philosophy that drives the department, and is supported through an array of programs designed to provide assistance for infants through senior citizens:

- Car seat safety inspections
- Caring Officers Providing Support (COPS)
- Explorers
- Georgia Teens Ride with PRIDE
- CarFit
- Police and Citizens Together (PACT)
- Citizens Police Academy

*\*\*For more information about these programs, please visit [suwanee.com](http://suwanee.com)*

“We are proud of the hard work that goes into our daily mission, and are pleased to have the continued support of the community we serve.”



## A COURSE SO NICE YOU MIGHT AS WELL DO IT TWICE

ANNOUNCING GWINNETT COUNTY’S VERY  
FIRST FULL MARATHON

### SUWANEE MARATHON & HALF MARATHON

Sunday, February 26 | Both races begin at 7:00 a.m.  
[www.Suwanee.com](http://www.Suwanee.com)

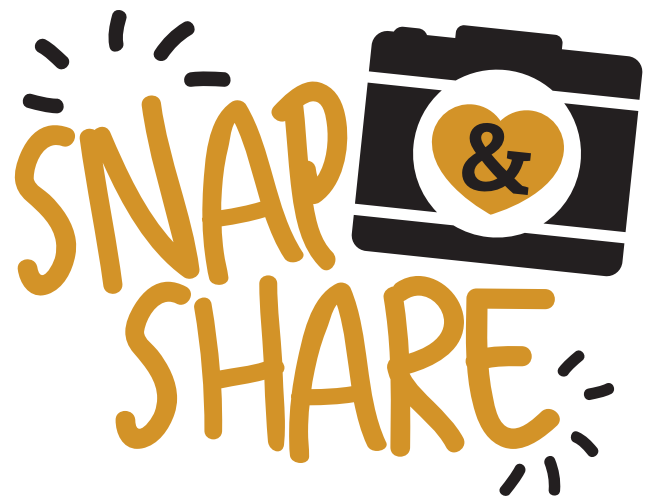
# Suwanee Citizens Police Academy from a Citizen's Perspective

Jessica Roth, Director of Business Services for the City of Suwanee, recently graduated from the Suwanee Citizens Police Academy. Here are a few of her takeaways after her experience riding along with one of our boys in blue:

- Police officers write a lot more warnings than you probably realize. So, don't assume that everyone you see pulled over is getting a ticket. My officer gave as many warnings during our day together as he did tickets.
- You should feel safer seeing a visible police presence with officers pulling people over in your community because that's how they're identifying criminals and getting them off our streets.
- Be honest and respectful if you get pulled over. Acknowledging your violation and not being argumentative may mean the difference between a warning and a ticket, depending on your officer and the circumstances.
- Police officers are on-the-go for their entire shift. Their downtime is spent writing reports and performing other administrative work. They're not hanging out at donut shops, like they're popularly portrayed! I was tired after our day and I only saw 6.5 hours of his 12-hour shift; nor did we experience any adrenaline pumping excitement!
- If you're not aware of the 'move over' law, you better get familiar with it and comply! [The Georgia Move Over Law requires drivers to move over one lane when possible if an emergency vehicle with flashing lights is parked on the shoulder of the highway.] They take the safety of their fellow officers seriously and expect the same from you. This is a super expensive ticket if you get one!

"I think you'll find most police departments want their community to get to know them in order to understand what they're doing and why," said Roth. "Police officers are human beings, just like you and me. Get to know your officers and your local agency so you can make your own judgments."

The Suwanee Police Department invites you to participate in one (or two, or three...) of our community policing programs and get to know the men and women of the Suwanee Police Department. Together, we can ensure that Suwanee remains a great place to live, work, and play.



The City of Suwanee is accepting submissions through December 31 for its annual Snap! Suwanee photo competition. The competition provides a means for participants to share images that communicate something telling about the Suwanee community.

Photos submitted to the competition should represent the Suwanee community in some way and ideally be taken within the City of Suwanee limits. Visit [suwanee.com](http://suwanee.com) for additional guidelines and an entry form.

Winning photographs will be exhibited for an approximate one-year period at City Hall beginning in March 2017.





**Mark your calendar now for Suwanee Fest 2017 on September 16 and 17!**



# Super City, Super People, SUPER FESTIVAL!

Super heroes of all ages descended upon Town Center Park on September 17 and 18 to enjoy Suwanee’s annual community celebration, Suwanee Fest!

The weekend kicked off with a parade full of scout troops, school orchestras, knights on horseback, goblins and ghouls, and even a triple-decker unicycle, winding roughly one mile into Town Center Park. Throughout the weekend, an estimated 60,000 people visited nearly 200 exhibitors and vendors, honed skills on a four-part super hero training course, and enjoyed 15 entertainment acts on the main stage, including Saturday headliner Who’s Bad.

**Exhibitors who were stand-outs in the Best of Show competition this year included:**

- Kob Sawdust • Pop’s Shop • Baskets by Andi • Forget Me Nots

**Among the winners in the “Super City, Super People” -themed parade were:**

**Best of Show**

- North Gwinnett High School National Arts Honor Society

**Most Creative**

- Suwanee First United Methodist Church
- Cub Scout Pack 518
- Oak Meadow Montessori School

**Best Reflection of Theme**

- Collins Hill Dance Compan
- Girl Scouts – Lanier Service Unit

**Most Entertaining**

- All Stars Performing Arts Academy
- From Hunger to Hope – Feed My Starving Children
- Peachtree Ridge Robotics


**Honorable Mention**

- Suwanee Magazine
- Collins Hill High School Air Force JROTC Unit
- North Gwinnett High School Air Force JROTC Unit

**“It was the best Suwanee Fest yet. Great children’s activities!”**  
– Karen Tevis







**“Thank you, it’s been an honor and I can’t wait til next year. Looking forward to a long relationship with the great City of Suwanee!”**

*– Dana Bridges, Vendor  
– Kob Sawdust*



Suwanee Fest continues to grow and exceed expectations every year thanks in large measure to the generous community-minded businesses and organizations who sponsor the festival. Our sincere appreciation to our awesome Suwanee Fest 2016 sponsors – we couldn’t do this without you!

**Presenting**

- 12Stone® Church

**Platinum**

- Gwinnett Daily Post

**Gold**

- Jim Ellis Automotive Group
- PNC Bank

**Silver**

- All Phase Home Services, Inc.
- Aquaguard Foundation Solutions
- Atlanta Gladiators Hockey
- Atlanta Renovation Store
- AT&T Gigapower
- Avonlea Apartments
- Bath Fitter
- BrandBank
- Children’s Healthcare of Atlanta
- Cool Air Mechanical
- Costco Wholesale: Mall of Georgia
- Delta Community Credit Union
- Everdry Waterproofing
- Farmers Insurance, The Albright Agency
- Free Chapel
- Freedom Family Chiropractic
- Georgia Fitness
- Gutterglove South & Home Renovations
- Gwinnett Medical Center
- Gwinnett Urgent Care

- Ideology Studio
- Imagix Dental of Suwanee
- KIND
- Larabar
- Lowe’s of Suwanee
- Mitsubishi Electric
- North Atlanta Primary Care
- North Georgia Pediatric Dentistry
- PeachSkin Sheets
- Power Home Remodeling Group
- PrePress to Printing
- Priority Roofing & Restoration LLC
- Quantum National Bank
- Renewal by Andersen
- Rhonda Hogan, DMD, PC
- Road Atlanta
- Stepping Stone Montessori
- Suwanee Dental Care
- Suwanee Magazine
- Suwanee Sports Academy
- Taylor Construction
- The Atlanta Journal-Constitution
- The Lasik Vision Institute
- Tiger Tails Animal Hospital
- True Source Family Chiropractic
- Whitney Orthodontics

**Friend of the Festival**

- Clark Patterson Lee



**“Such a great event! It was my first time there and I was completely impressed.”**

*– Christine Roche  
Van Buren*

**“Suwanee knows how to throw a fantastic festival, that’s for sure! Saturday was so fun and Sunday was AMAZING because, despite the rain, my town still entertained, kept the shopping going, and put smiles on everyone.”**

*– Kristen Nielson*



# 'PLOT'

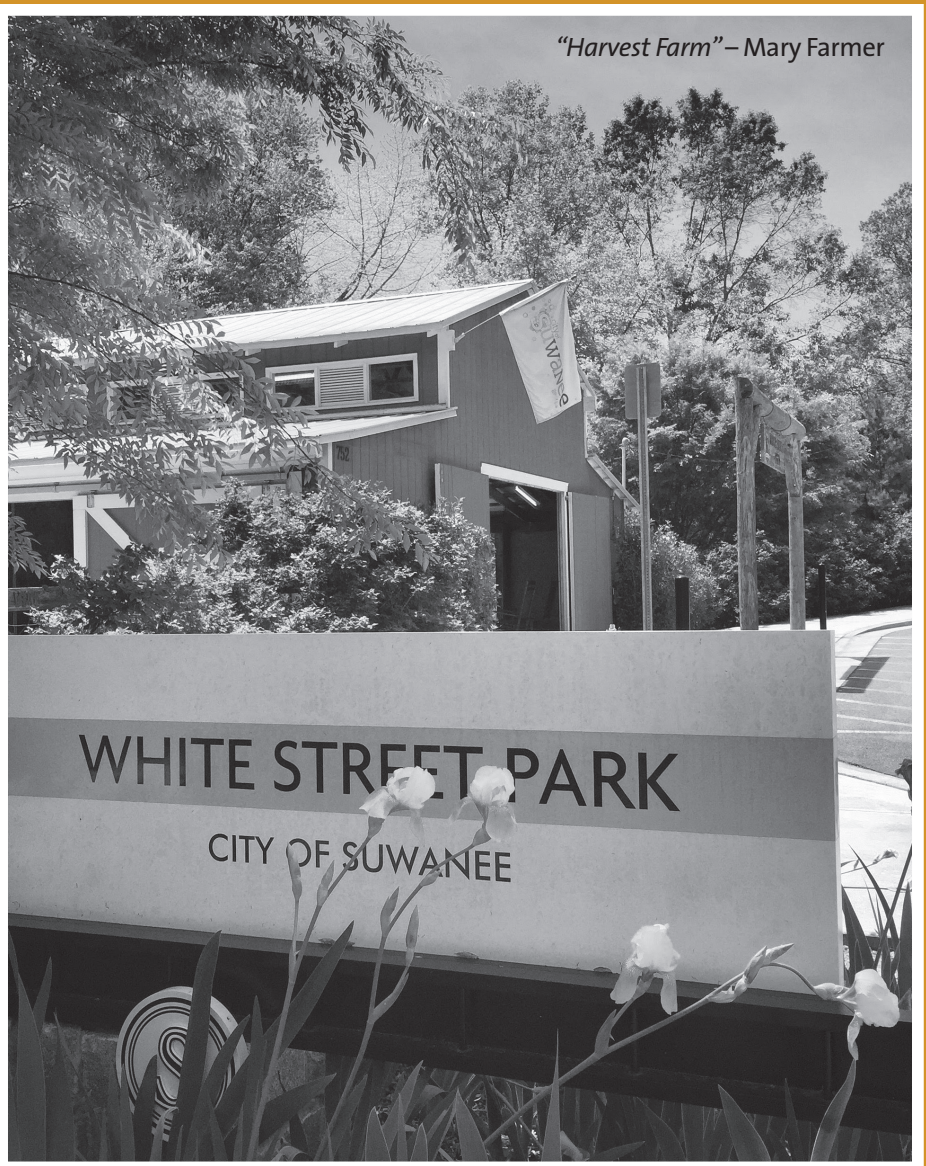
## a Healthier, Fresher 2016

The City of Suwanee is now accepting applications for 2017 plots (our 7th growing season!) at the Harvest Farm organic community garden. Garden plots are assigned on a first-come, first-serve basis with priority given to City residents, property owners, and taxpayers, as well as returning gardeners.

Plots are available in three different sizes, with the annual fee ranging from \$50-\$100. City of Suwanee residents/taxpayers receive a 25 percent discount.

Annual fees include use of a raised bed, utilities, basic community tools, social and educational events, and, when available, compost. Gardeners incur personal expenses for items such as seeds, plants, amendments, stakes, and trellises.

Applications for Harvest Farm may be found at [suwanee.com](http://suwanee.com).



"Harvest Farm" – Mary Farmer



## WINTER FARMERS MARKET

SECOND SATURDAY  
OF THE MONTH

NOV-APR  
9-11AM

# Welcome to City Hall

**Joaquin Lopez Salas** was hired 08/29/16 as an Equipment Operator I. Born in the City of Lilburn and residing in Lawrenceville, this hometown hire has over eight years of experience as an equipment operator.

New Suwanee Police Officer **Matthew Pelham** was hired 9/30/16. He comes to the Suwanee PD from the Jefferson Police Department, and he also resides in Jefferson. He has six years of experience as a patrol officer.

### CONGRATULATIONS!

Suwanee Police Officer **Chance Belcher** was promoted to Corporal and Officer **Sam Lauricella** was promoted to Sergeant.

On September 11, **Sergeant Jeff Dickens** was awarded the Law Enforcement Commendation from the Daughters of the American Revolution.



Suwanee City Clerk and Director of Administrative Services **Elvira Rogers** successfully completed the Clerks Masters Education Management Program from the Carl Vinson Institute of Government at the University of Georgia.



Downtown and Business Development Manager **Adam Edge** was named one of five Igniting the Flame award winners by *American City & County* magazine. Adam was recognized as an impactful young government leader thanks in part to his work with the Suwanee Youth Leaders and ability to creatively engage citizens and businesses in envisioning the redevelopment of Suwanee's downtown area.

## Open

## for business

The following companies received new business licenses from the City of Suwanee in August and September:

- **7 Sisters Salon**  
1300 Peachtree Industrial Boulevard
- **A Full Circle Salon**  
3131 Lawrenceville-Suwanee Road
- **Alloy Personal Training for Women**  
1500 Peachtree Industrial Boulevard
- **Apparel Care Master Dry Cleaners**  
2850 Lawrenceville-Suwanee Road
- **C & C Autoworks, LLC**  
4411 Suwanee Dam Road
- **Capital Choice Financial Group**  
3725 Lawrenceville-Suwanee Road
- **Cuts & Colour Salon by Natasha**  
1500 Peachtree Industrial Boulevard
- **Design Trendz LLC**  
659 Main Street
- **Destin Events**  
1300 Peachtree Industrial Boulevard
- **Environmental Holdings Group, LLC**  
150 Satellite Boulevard
- **Farmers Insurance**  
302 Satellite Boulevard
- **Geveko Markings, Inc.**  
300 Brogdon Road
- **Hanna Sushi & Bistro**  
315 Peachtree Industrial Boulevard
- **HNTC Group, Inc**  
1255 Buford Highway
- **iCloud Technologies Corp**  
485 Horizon Drive
- **IDIIL Learning Center**  
3555 Lawrenceville-Suwanee Road
- **Main Events Entertainment**  
471 Northholt Parkway
- **Majestic Nail Salon**  
1500 Peachtree Industrial Boulevard
- **North Point Motorcars, Inc.**  
301 Brogdon Road
- **Opulence Hair & Lashes Salon**  
1500 Peachtree Industrial Boulevard
- **Phenix Salon Suites Suwanee**  
1500 Peachtree Industrial Boulevard
- **Silverton Mortgage Specialists, Inc.**  
667 Main Street
- **Shintec, Inc.**  
3635 Burnette Park Drive
- **SMB Essentials**  
130 NE Satellite Boulevard
- **Southern Wall Systems**  
590 Satellite Boulevard
- **Studio 101 Salon & Spa**  
1500 Peachtree Industrial Boulevard
- **Styles by Amber**  
1500 Peachtree Industrial Boulevard
- **The Jaden Gypsy Salon & Creative**  
1500 Peachtree Industrial Boulevard
- **Trademark Design Painting**  
3700 Burnette Drive
- **Universal Soul Couture**  
425 NW Buford Highway

## upcoming events

official newsletter of the city of suwanee, georgia

### **N** November

- |   |           |
|---|-----------|
| 1 Planning Commission                             | 6:30p.m.  |
| 2 Public Arts Commission                          | 6:00p.m.  |
| 3 City Council Workshop                           | 5:30p.m.  |
| 5 Suwanee Wine Fest                               | 12:00p.m. |
| 6 Suwanee Classic Car Show                        | 10:00a.m. |
| 8 Harvest Farm Board Meeting                      | 5:00p.m.  |
| 12 Kiwanis All-American 5K                        | 8:00a.m.  |
| 12 Winter Farmers Market                          | 9:00a.m.  |
| 15 Downtown Development Authority                 | 7:30a.m.  |
| 15 Zoning Board of Appeals<br>(Crossroads Center) | 6:30p.m.  |
| 15 City Council Meeting                           | 6:30p.m.  |

### **D** December

- |   |          |
|---|----------|
| 1 City Council Workshop                           | 5:30p.m. |
| 2 Jolly Holly Day                                 | 6:30p.m. |
| 6 Planning Commission                             | 6:30p.m. |
| 7 Public Arts Commission                          | 6:00p.m. |
| 10 Winter Farmers Market                          | 9:00a.m. |
| 13 Harvest Farm Board Meeting                     | 5:00p.m. |
| 13 City Council Meeting                           | 6:30p.m. |
| 20 Downtown Development Authority                 | 7:30a.m. |
| 20 Zoning Board of Appeals<br>(Crossroads Center) | 6:30p.m. |