



2019 ANNUAL REPORT



WITHOUT A STRONG FOUNDATION, YOU'LL HAVE TROUBLE BUILDING ANYTHING OF VALUE.

Looking back on calendar year 2019, much has been accomplished. Notably, we **adopted an updated Comprehensive Plan** to guide decisions regarding growth and development within the city. We've **balanced a \$13.4M operating budget** while also **keeping the millage rate** the same (or lower) for the past 16 years. And we've embarked on our first-ever **capital campaign for public art**.

While those accomplishments are less tangible, they are just as real and solid as the work that's easier to see, such as **resurfacing 4.5 miles of roads**, adding **seasonal color to a number of locations** throughout the city, and essentially **doubling Suwanee's downtown**. During the **2040 Comprehensive Plan process**, the community told us that they want more restaurants, shopping, and local places to go and socialize – and so we're working on that. Our DDA has participated in **two public-private partnerships** to bring more of those types of amenities to our community.

The City of Suwanee has spent years laying the groundwork for the future that is now our present. We've prioritized projects that reflect our community's values and to focus on that which matters most, and to **create an environment where all members of our community can thrive**. These projects set us on a solid path for a strong future.

The job of creating a strong community is **accomplished as a team**. Our City Council leads through policy, shaping a vision for our community. City staff brings that vision to life through implementation, efficiently and effectively delivering services. Engaged citizens invest their time and resources, serving on boards and commissions and weighing in on decisions effecting our city.



10 SHOW ME THE MONEY

Catching up with the City of Suwanee's finances and a \$13.4M balanced operating budget.

ART FOR ALL

9 CAPITAL CAMPAIGN

Raising \$1.25M in private contributions to support the inclusion of three new public art pieces in the Town Center Park expansion.

CSI: SUWANEES

15 PROTECTING THE INNOCENT

The Suwanee PD participated in the Internet Crimes Against Children (ICAC) Operation Southern Impact in 2019, resulting in numerous arrests for child exploitation throughout Gwinnett County.

FUTURE GROWTH

17 2040 COMPREHENSIVE PLAN

An important tool that guides decisions about how to manage growth within the city, the 2040 Comprehensive Plan provides predictability for residents and property owners about the future use of land.

- 3** Orchard at White Street Park
- 5** Town Center
- 7** Award-Winning Events
- 9** SculptTour
- 15** Explorers Program
- 17** Pedestrian & Bike Plan
- 21** Court Expansion
- 23** Cigna Well-Being Award
- 25** Demographics

PLUS:

- Brewery • Swag • The Greatest Festival on Earth
- Police Training • Construction Timeline
- Environmental Services • Cross-Training
- SWELL Program • Millage Rate

Featuring Suwanee's complete Events Calendar for January-December 2019



The scoop on nearly
4.5 MILES
of concrete!

Parks and Recreation

“Treat yo’self.”

PAVING THE WAY

In 2019, the city **resurfaced 4.5 miles of roads**, including Town Center Avenue, Barony Cove, Rocky Peak Drive, White Rock Drive, Riverview Run Lane, Paces Lane, Station Way, Lake Point Boulevard, Bend Creek Trail, Baxley Pine Trail, Celebration Drive, Fleetwood Circle, Timberlost Trail, Maple Terrace Place, and Brogdon Road along with portions of Martin Farm Road, King Street, Moore Road, Chattahoochee Run Drive, and Jackson Street.

HAPPY LITTLE TREES

The city hired a full-time environmental services manager who, among other duties, has **implemented targeted beautification efforts**, resulting in the addition of seasonal color and landscaping improvements to a number of locations, including city parks, buildings, and streetscapes.



“The new landscaping around the city is outstanding!” commented one citizen. “I didn’t know what we were missing!”

FIXER UPPER

Public Works consolidated the department (previously dispersed between City Hall and a building on Windsor Park Drive) to a **36,000 square foot facility** on Swiftwater Park Drive. This facility now houses office, storage, and warehouse space for 24 full-time and 22 part-time employees.

close up

HOW IT’S MADE

Public Works did whatever was required (lifting, moving, welding, drilling) to **prepare bases and install** the sixth chapter of the city’s popular SculptTour temporary sculpture exhibition to Town Center this May.

“They’re a big part of the reason that we get the quality of art that we do. Many cities purchase the art and leave installation to the artist. Public Works prepares the art bases ahead of time, and is there throughout every step of the installation, offering assistance where needed,” said Toni Shrewsbury, who manages the city’s public art program.

I AM GROOT



The Orchard at White Street Park had another fruitful (get it?) year. A **caretaker program** was established, allowing citizens to “adopt” the Orchard for a week at a time. The **community outreach program** was enhanced, with new programs to engage local groups such as scouts, homeschoolers, and Annandale Villagers, for fun and educational activities. The Orchard also partnered with the North Gwinnett High School Robotics department to develop a **customized weather station**. In addition to recording rainfall and temperature data, the project would also track chill hours: the cold weather hours from fall dormancy until spring flowering that determine the fruit crop for the year.



THE SCOOP ON TOWN CENTER, SOCIAL MEDIA ENGAGEMENT, & KILLER T-SHIRTS!



MAD SUWANEE

GROWTH AT TOWN CENTER

The addition of Solis Town Center – a **public-private partnership** between the Suwanee Downtown Development Authority and developer Terwilliger Pappas – **essentially doubled Suwanee’s downtown area**, which now boasts over 150,000 square feet of commercial and office space, as well as 560 residential units within an 80-acre area. Solis (recently renamed Siena) is up to four completed buildings; ground level commercial space is near lease completion, with restaurants and shops set to open in early 2020. The first restaurant, Bottles & Bones, is expected to be among the first to open. Speaking of new Town Center restaurants, Tequila Mama Taqueria opened in May.

close up

WHERE EVERYBODY KNOWS YOUR NAME

The Downtown Development Authority partnered with StillFire Brewing to repurpose Fire Station 13 into **Town Center’s first brewery** after the lease agreement between Gwinnett County and the DDA expired in April. The high-end, industrial-style taproom opened in October, and features an always changing selection of original craft beers on tap. Gwinnett County plans to build a **larger fire station** to accommodate their needs on Buford Highway near Westbrook Road.

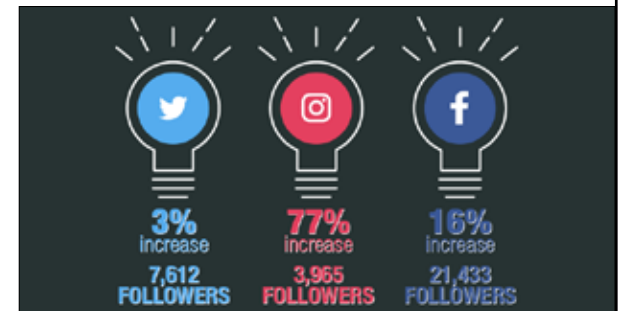
WE HEAR VOICES

The economic development department completed a **nine-month leadership training** program called Xcelerate featuring the 5 Voices, which focuses on understanding and properly using your leadership voice while also valuing the voices of those around you. The content was so impactful that Assistant City Manager Denise Brinson was officially trained in 5 Voices leadership, and has incorporated it into the Suwanee Youth Leaders program. New city employees will learn the 5 Voices as part of the on-boarding process.

MARKETING & COMMUNICATIONS

In addition to producing regular marketing materials, multiple publications were updated or created, including the volunteer brochure, SculpTour brochure, Parker’s Passport, capital campaign marketing materials, and the downtown brochure. New hats, stickers, magnets, koozies, and t-shirts were added to the Welcome Center.

SOCIAL MEDIA ENGAGEMENT



SUWANEE YOUTH LEADERS

The City of Suwanee completed its sixth year of the Suwanee Youth Leaders (SYL) program, with **68 students** participating in 2019. SYL was recognized with a 2018 Bronze Award for Best Volunteers from the Southeast Festivals & Events Association.



WEEKEND SPECIAL

AMENDED OPEN CONTAINER ORDINANCE

In August, the City Council approved amendments to allow restaurants or vendors to serve mixed drinks at Town Center Park and **extend the open container area** to include the new brewery.



SUWANEE SATURDAY NIGHT LIVE

and sometimes Friday, and Sunday on occasion

RETURNING FAVORITES!
Summer Porch Jam
Glow in the Park
Suwanee Fest

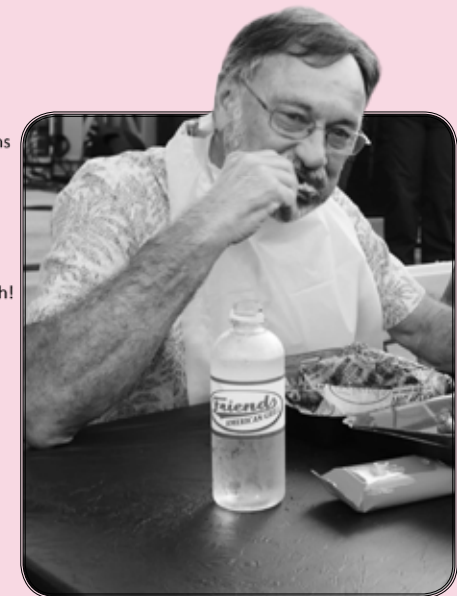
MUST-SEE NEW EVENTS!
Big Artsy
10th Anniversary Photo

City of Suwanee 2019 Event Schedule

	DATE	
FEB.	10	Suwanee Half Marathon & Old Town 5K
	16	Suwanee Sweetheart Sprint
MAR.	10	10 th Anniversary Community Photo
	16	Kiwanis Shamrock 5K
	16	Suwanee American Craft Beer Fest
	23	Atlanta Humane Society 5K
APR.	13	Race to Cure Sarcoma Atlanta
	20	Run for the Rescues 5K
	20	Glow in the Park
	21	Community Sunrise Service
	27	Gwinnett March for Babies
MAY	3	Food Truck Friday
	4	Star 94.1's 5 Queso 5K
	4&5	Star 94.1's Woofstock
	11	Suwanee Jazz Fest
	18	Great Strides Atlanta
	18	Common Ground Music Festival in the Park
JUN.	1	Movies Under the Stars
	7	Food Truck Friday
	15	Big Artsy
	21	Summer Porch Jam
JUL.	20	Broadway in the Park 5K
	26&27	Broadway in the Park
AUG.	2	Food Truck Friday
	2	Love Rolls Walk
	3	Movies Under the Stars
	10	August Concert & Wing Fest
	24	Suwanee Health & Fitness Festival
SEPT.	6	Food Truck Friday
	7	Annandale Village Extra Mile Walk/Run
	7	Movies Under the Stars
	21&22	Suwanee Fest
OCT.	5 & 6	Suwanee Fine Arts Festival
	8	Petite Le Mans Kick-Off Party
	12	Taste of BBQ
	19	Bridge the Gap 5K
	26	Jonny & Xena Spread the Words 5K
	27	Trek or Treat
NOV.	2	Suwanee Wine Fest
	9	Bark for Life
	10	Suwanee Classic Car Show
DEC.	6	Jolly Holly Day
	7	Happyfeat's Run Run Rudolph 5K
	8	Happyfeat's Jingle in the Park Holiday Market

STARRING 40+ EVENTS!

And musical guests:
THE SMITHEREENS,
QUEEN NATION,
 and more!



WEEKEND SPECIAL Suwanee Fest named a Southeast Tourism Society Top 20 Event

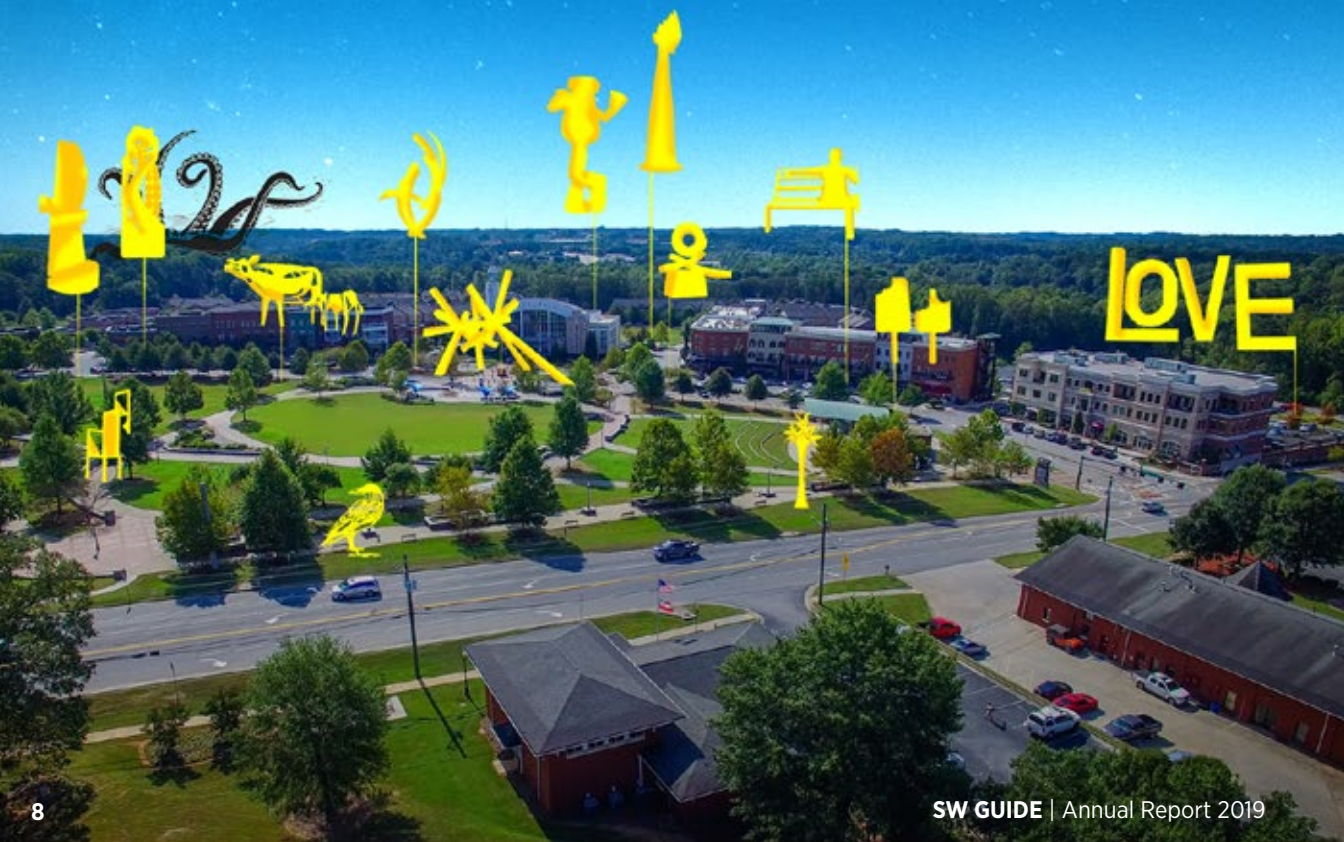
- SOUTHEAST FESTIVALS & EVENTS ASSOCIATION KALEIDOSCOPE AWARDS**
- Best Sponsor, GOLD – Tiger Tails Animal Hospital, Suwanee Fest
 - Best Event Within an Event, GOLD – Gwinnett Bicentennial Celebration, Suwanee Fest
 - Most Creative Idea, SILVER – Fan, Summer Porch Jam
 - Best New Event, SILVER – Summer Porch Jam
 - Best Event Photograph, SILVER – Suwanee Fest
 - Best Promotional Poster, BRONZE – Summer Porch Jam
 - Best T-Shirt, BRONZE – Suwanee Fest

SW GUIDE

ART IN THE CITY

14 HOT NEW PIECES YOU CAN'T MISS!

**TWO Additions to the Permanent Collection!
SIX Participating Developers!**



“And I couldn’t help but wonder, would the Earth without art truly be ‘eh’ ?”

INSTA-WORTHY INSTALLMENT

Fourteen new “residents” moved into Suwanee with the **sixth installment** of the city’s popular **SculpTour temporary sculpture exhibition**, installed in Town Center this May. Since 2011, the award-winning SculpTour program has brought 92 sculptures to a walkable one-mile area of downtown Suwanee.

THEY’LL BE THERE FOR YOU

The Suwanee Public Arts Commission, using donated funds, **purchased fan favorites** *Mr. Eggwards* by Kimber Fiebiger and *Friends* by Nnamdi Okonkwo to add to the city’s permanent collection. Fabricated from bronze, *Mr. Eggwards* is ready for any social engagement that passes his way, which is helpful, since he (naturally) sits on a wall in view of the Town Center Stage. *Friends* – the sculpture on the Charleston Market Street side of City Hall – is a symbolic statement in bronze of the spirit and essence of friendship. The Town Center stage mural also received a facelift in 2019.

THE ONE CHOICE

In 2008, the city and its Public Art Commission adopted a policy of encouraging developers to use one percent of construction costs to include public art or support public art as a component of new projects. In 2019, **six developers participated** and added art to the community: Holtkamp Heating & Air, Solis Suwanee Town Center, Heartis Senior Living, Tench Road Office Park, Suwanee Animal Hospital, and Southern Wall Systems.



EDITOR’S CHOICE

SUPPORT COMMUNITY ART FOR ALL

The city completed a fundraising feasibility study last year and now is **embarking on a capital campaign** to raise \$1.25M in private contributions to support the inclusion of three new public art pieces in the Town Center Park expansion. These pieces – an interactive, signature installation, a gateway entrance piece, and an installation in the railroad underpass – will provide the **margin of excellence** above and beyond the basic infrastructure of the park, and act as a catalyst to transform the project from a park to a place. The campaign kicked off on the right foot with generous **\$100,000 donations** from Quantum Bank and Reeves + Young.

PREMIERE

pARTy!

To celebrate the newest installment of SculpTour, the city hosted an event entitled Big Artsy on June 19. The event also kicked off the city’s first-ever capital campaign for public art, and featured food trucks, live music, and a full cast and orchestra performance of *Disney’s Newsies* by the Aurora Theatre. The event also debuted Parker’s Passport – a super fun guide to the 2019-21 SculpTour exhibit, designed just for kids!

The Community Foundation for Northeast Georgia chose the City of Suwanee’s **‘Art for All’ capital campaign** as one of the **highlighted nonprofits** at this year’s Good2Give Celebration on Saturday, August 17. Good2Give highlights the incredible impact the chosen nonprofits are having in our community, and provide unparalleled exposure to potential donors.



the Facts of Life

A behind-the-scenes look at the city's finances

WHERE DID THE MONEY COME FROM?
WHERE DOES THE MONEY GO?

**You take the good, you take the bad,
You take them both and there you have
The facts of life**



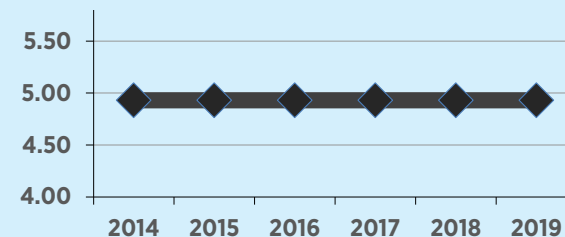
BUDGET

The City of Suwanee began fiscal year 2019 with a \$13.4 million balanced operating budget. The final amended operating budget of \$14.1 million, amounted to an overall increase of \$730,000. Operating functions increased by \$72,000, less than 1%. The balance of the difference is from end-of-year capital transfers of \$658,000 to pre-fund the city's capital improvement program.

Suwanee's adopted fiscal year 2020 operating budget of \$13.8 million is a decrease of (\$330,130) or - 2.3% from the final amended 2019 budget. The majority of the difference in the fiscal year 2019 final and the 2020 adopted is the fourth quarter capital prefunding. Prefunding Suwanee's capital improvement program is part of Suwanee's pay-as-you go financing for capital projects.

MILLAGE RATE

At 4.93 mills, Suwanee's millage rate has stayed the same (or lowered) for the past sixteen years.

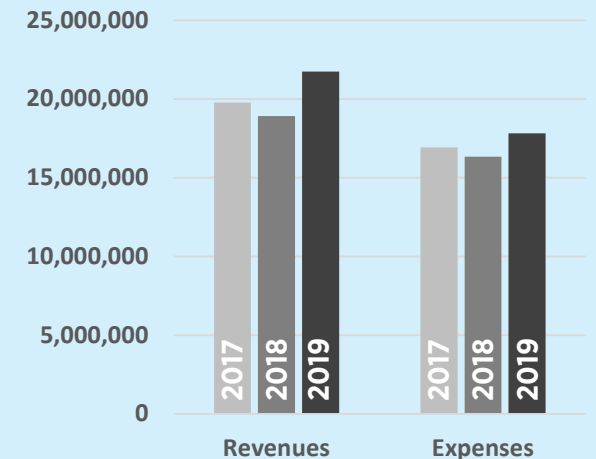


DEBT SERVICE

At the end of fiscal year 2019, the city had total bonded debt outstanding of \$36,758,054 comprised of \$9,835,000 general obligation debt backed by the full faith and credit of the city, and \$26,923,054 revenue bonds obligated through an intergovernmental agreement with the Urban Redevelopment Agency. Suwanee has a AAA long-term bond rating from Standard & Poor's Global Ratings. This is the highest rating attainable, which allows the city to borrow at the best rates possible.

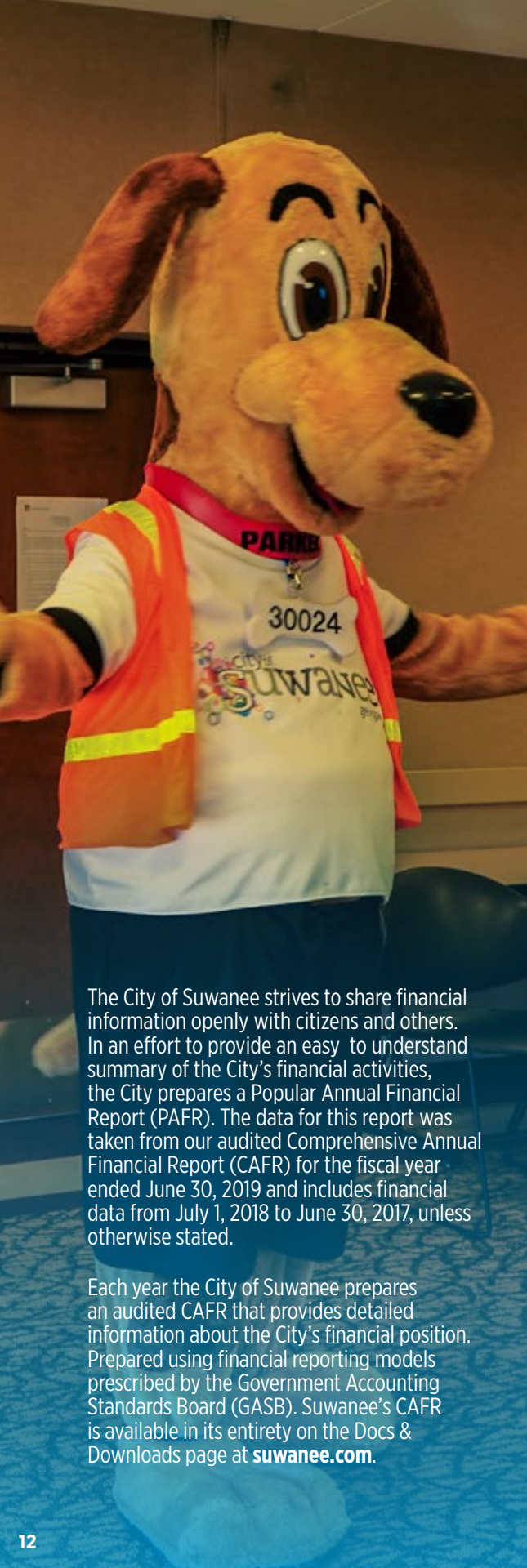
REVENUES & EXPENSES

Revenues represent dollars received, and expenses are costs associated with providing services.



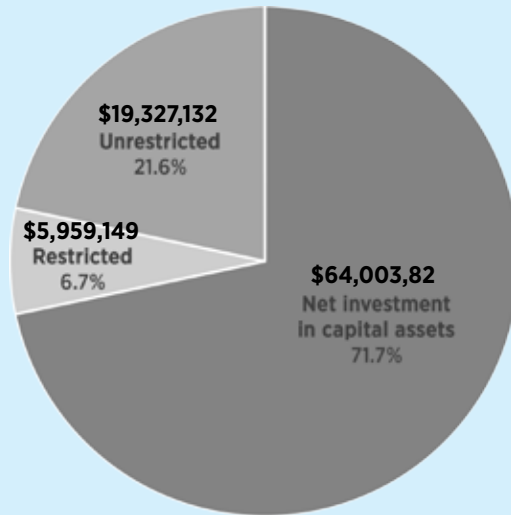
The three-year history above shows that revenues have increased by \$1,970,677 (10%) from 2017 to 2019 and by \$2,820,398 (15%) from 2018 to 2019. The majority of the difference between 2017, 2018, and 2019 revenues is due to developer-contributed infrastructure (sidewalks, streets, curbing, street lighting, and storm drainage), \$1,264,683 was received in fiscal year 2017 and \$1,867,331 was received in fiscal year 2019.

The three-year history also demonstrates that expenses have increased at a lower rate as compared to revenues over the three-year period. Expenses increased from 2017 to 2019 by \$908,339 (6%) and they increased by \$1,491,660 (9%) from 2018 to 2019. The majority of the increase is due to street repair and resurfacing.



WHAT THE CITY OWES & OWNS

Net position summarizes everything the city owes and owns; it provides a snapshot of the city's financial health at the end of the fiscal year.



The largest portion of Suwanee's net position (72%) represents capital assets such as land, buildings, equipment, and infrastructure (roads, bridges, and other immovable assets). The City uses these capital assets to provide services to citizens. Investment in capital assets are reported net, minus any related debt. Resources needed to repay any debt must be provided from other resources, since capital assets themselves cannot be used to liquidate debt.

- NET INVESTMENT IN CAPITAL ASSETS**
 The difference between the amounts paid for capital assets and any debt used to acquire those assets, such as loans or mortgages.
- RESTRICTED**
 Funds that are not available for general use by the city because they must be used for a specific purpose or projects as required by law or regulations. Examples included Special Purpose Local Option Sales Tax (SPLOST) funds set aside for capital projects, unspent grant funds, and resources collected for future debt payments.
- UNRESTRICTED**
 The remaining balance that has not been reported in any other classification.

The City of Suwanee strives to share financial information openly with citizens and others. In an effort to provide an easy to understand summary of the City's financial activities, the City prepares a Popular Annual Financial Report (PAFR). The data for this report was taken from our audited Comprehensive Annual Financial Report (CAFR) for the fiscal year ended June 30, 2019 and includes financial data from July 1, 2018 to June 30, 2017, unless otherwise stated.

Each year the City of Suwanee prepares an audited CAFR that provides detailed information about the City's financial position. Prepared using financial reporting models prescribed by the Government Accounting Standards Board (GASB). Suwanee's CAFR is available in its entirety on the Docs & Downloads page at suwanee.com.

WHERE DID THE MONEY COME FROM?

Total revenues for fiscal year 2019 were \$21,736,909, of which 30% was from property taxes. Other main revenues sources include capital grants and contributions (26%) which include revenues received from SPLOST (Special Purpose Local Option Sales Tax) and donated infrastructure from developers, charge for services (10%), and franchise fees (8%).

PROPERTY TAXES

- Residential Property Taxes 15%
- Commercial Property Taxes 15%

GRANTS

Includes operating and capital grants. Operating grants are used for day-to-day operations of the city. Capital grants are used for capital purposes such as building roads, sidewalks, facilities, etc.

CHARGES FOR SERVICES

Fees collected for services rendered, such as building inspection permits, water usage fees, park rental fees, etc.

FRANCHISE FEES

Fees collected from utility companies for the use of city streets and right-of-ways, in order to provide services such as natural gas, telephone, cable television, and fiber optic cable service.

BUSINESS TAXES

Revenues from occupational licenses issued to businesses and financial institutions.

ALCOHOLIC BEVERAGE TAXES

Taxes on the sale, distribution, or consumption of distilled spirits, malt beverages, and wine.

INSURANCE PREMIUM TAXES

Taxes on insurance premiums written by companies conducting business within the city.

HOTEL/MOTEL TAXES

Excise taxes charged for hotel rooms or accommodations.

OTHER

Includes monies earned from investments of city funds and donations.

WHERE DID THE MONEY GO?

The city's expenses totaled \$17,831,692 for fiscal year 2019: 30% was related to public works, 28% to public safety (police services), and 19% general government.

PUBLIC SAFETY

Costs associated with maintaining a police department which includes maintenance of order, law, safety, and other matters affecting the public welfare.

GENERAL GOVERNMENT

Cost of supporting legislative activities, human resources, city clerk, finances, legal, data processing, public information, and general government facilities.

HOUSING & DEVELOPMENT

Cost of planning, inspections, code enforcement, and economic development.

CULTURE & RECREATION

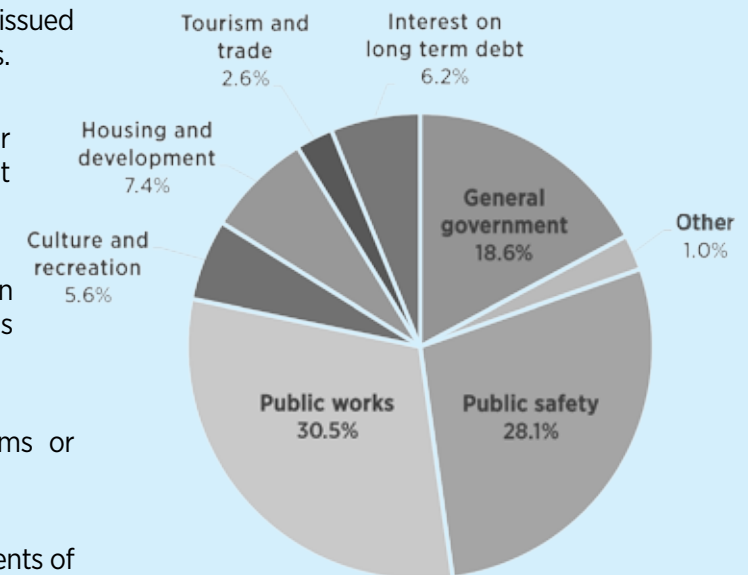
Cost of maintaining the city's park system and coordinating special events.

INTEREST ON LONG-TERM DEBT

Interest payments for parks, open space, and construction of City Hall.

OTHER

Cost of municipal court operations and tourism.





“10-4, Good Buddy.”

COMMUNITY ORIENTED POLICING

The city’s guiding philosophy is based on the Community Oriented Policing approach, focusing on high levels of **community interaction and police visibility**. One such program, the Citizens Police Academy, offers a hands-on understanding of the experiences of being a police officer. Twenty citizens graduated from the Citizens Police Academy in 2019.

One of the department’s most successful community oriented programs, Police And Citizens Together (PACT), assigns a dedicated officer with each neighborhood to serve as a liaison with whom citizens can address problems before they become criminal activity. In 2019, members of the city council began attending PACT neighborhood meetings as well; the PD is on pace to **certify all compliant PACT neighborhoods**.

CERTIFICATION

The Suwanee Police Department maintains a State of Georgia certification, as well as national accreditation through Commission on Accreditation for Law Enforcement Agencies (CALEA) – **one of just 57 CALEA accredited agencies** in Georgia. In addition, this year the department hosted Crime Analysis and Intelligence certification classes.

TRAINING

- Officers completed 6,667 hours of training
- Five new officers graduated from the police academy
- Qualified two additional Field Training Officers
- Three officers attended Basic Accident Reconstruction courses
- Two dispatchers became Communication Training Officer certified
- Completed 19 Special Response Team operations without incident
- Trained Assistant Dispatch Supervisor in National Incident Management System
- Certified 14 officers in Critical Incident Training
- Implemented the National Incident Based Reporting System

RESTRUCTURING

In 2019, the Suwanee Police restructured the department. Former **Captain Cass Mooney was promoted to Deputy Chief**; three lieutenants, three sergeants, and two corporals were also promoted.

EDITOR'S CHOICE

EXPLORERS

The Explorers program allows young people ages 14-20 to explore a career in law enforcement. The program welcomed two new advisors this year, along with five additions to the 15 current participants. Eight Explorers were certified in traffic direction; they also wrote a grant and were awarded \$7,000 from the Mary P. Dolcaini Halloran Foundation.

EQUIPMENT

- Obtained optimal equipment to support Special Response Team needs
- Installed four additional defibrillators to improve availability in the event of a cardiac incident
- Upgraded range equipment
- Added two new Computer Aided Dispatch systems
- Dispatch telephones updated to accept 911 text messages
- Upgraded GPS tracking on all patrol vehicles
- Purchased Drug Terminator, allowing the immediate on-site destruction of drugs and medications

close up

PROTECTING THE INNOCENT

The Suwanee PD participated in the Internet Crimes Against Children (ICAC) Operation Southern Impact in 2019, resulting in **numerous arrests** for child exploitation throughout Gwinnett County. The department investigated twenty ICAC cases, one of which involved the **rescue** of an exploited juvenile, and completed three **additional arrests** of child predators. Additionally, the department teamed up with the Gwinnett County Sheriff’s Office’s Operation PURGE for a warrant sweep which resulted in drug seizures and arrests.





Now this is the story all about how,
 Planning and development happen in this town,
 And I'd like to take a minute, just read and see
 The story of how this place became the City of Suwanee.



2040 COMPREHENSIVE PLAN

In February 2019, the Suwanee City Council **voted to adopt the 2040 Comprehensive Plan**. An important tool that guides decisions about how to manage growth within the city, the 2040 Comprehensive Plan provides predictability for residents and property owners about the future use of land. The plan is updated every ten years..

close
up



SUWANEE 2040 VISION STATEMENT

The 2040 Vision Statement paints the picture of what Suwanee should be in the year 2040. It was very intentionally crafted by city staff and the 2040 Steering Committee, and vetted in public open houses throughout the planning process.

Suwanee 2040 will be a safe, fun, attractive, inclusive, evolving city with a unique, vibrant downtown that is well-connected to established neighborhoods and commercial/employment opportunities.

Neighborhoods farther from downtown will be largely suburban, while development types closer to downtown will be taller, denser and highly walkable.

Town Center will be the city's economic, social, and cultural hub. **Historic Old Town** will be characterized by a mixture of old and new quaint smaller scale development integrated into the existing traditional fabric. **Suwanee Gateway** will serve local and regional commercial and employment needs.

Established neighborhoods will continue to be an essential source of quality homes attractive to families. **Art, parks, greenways, and open space** will be important elements for recreation and identity. Suwanee will continue to grow in a deliberate manner that enhances the city's varied communities and quality of life.

PEDESTRIAN & BICYCLE PLAN

The city held an open house in August to provide for **public input for the Pedestrian & Bicycle Plan** update. In 2006, the city created the City of Suwanee Alternate Transportation Plan to analyze existing pedestrian and bicycle facilities in the city and identify potential improvements. The plan was updated in 2011 and serves as a guide for prioritization and implementation of pedestrian and bicycle facilities to make Suwanee more walkable and bikeable. All existing bicycle and pedestrian facilities were inventoried in the process.



The
PLANNING DEPARTMENT
 of Suwanee
2040 COMPREHENSIVE PLAN!
 Pedestrian & Bicycle Plan Update!

SW GUIDE

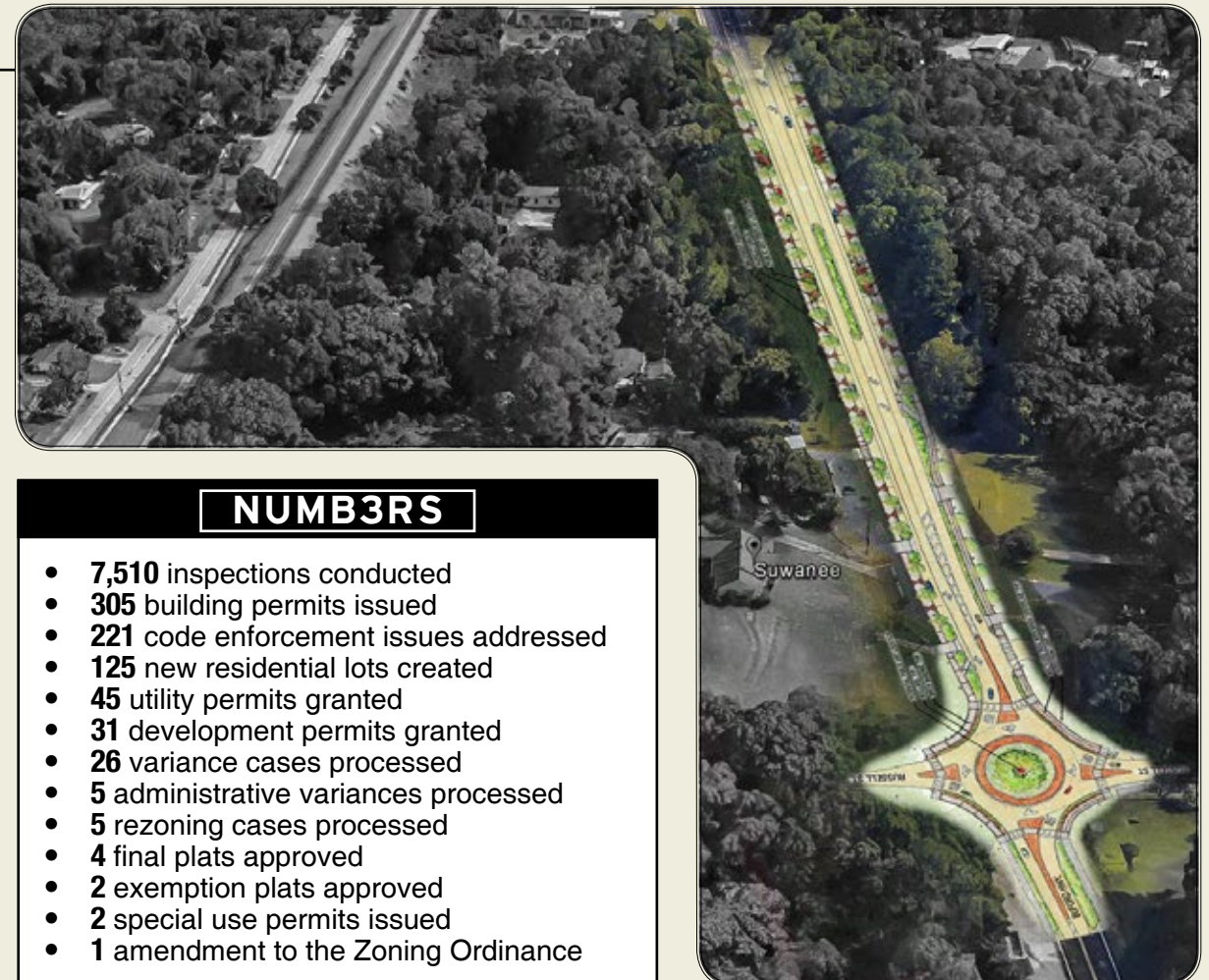


MUST-SEE CONSTRUCTION TIMELINES

City of Suwanee 2019 Managed Construction Projects

The **strong economy in 2019** had the general effect of raising incomes, perpetuating a cycle of rising demand. The city grew with new residential, commercial, and industrial developments. The city also **advanced several city-initiated public works projects** throughout the community.

	Q1	Q2	Q3	Q4
Lawrenceville-Suwanee Road Sidewalks				
Buford Highway Reconstruction				
Municipal Courthouse Expansion				
Scales Road Sewer Expansion				
White Street Sewer Expansion				
Jackson Street Sewer Expansion				
Public Works Building Renovation				
Town Center Parking Deck				
Town Center Pond / Detention				



NUMB3RS

- 7,510 inspections conducted
- 305 building permits issued
- 221 code enforcement issues addressed
- 125 new residential lots created
- 45 utility permits granted
- 31 development permits granted
- 26 variance cases processed
- 5 administrative variances processed
- 5 rezoning cases processed
- 4 final plats approved
- 2 exemption plats approved
- 2 special use permits issued
- 1 amendment to the Zoning Ordinance

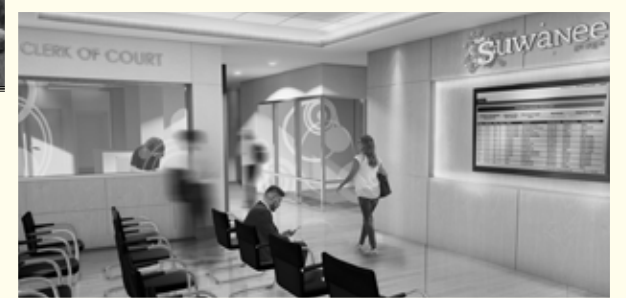


CITY OF SUWANEE
MUNICIPAL COURT



J U D G E N O R M

4 Things We're Excited About
in the Renovated Court Building



TRADING SPACES

The Business Services department – which has two divisions: Licensing & Taxation and Municipal Court – spent 2019 **reorganizing and cross-training staff**. An employee from each division was selected to cross-train in order to be better prepared for busier seasons and emergencies and expand skillsets. Due to the success of the program, more long-time staff will be cross-trained in 2020, and expectations for new hires have been re-set to include work in both divisions.

THE PEOPLE'S COURT

The municipal court also transitioned from one to two bailiffs per court session, greatly improving the customer service experience.

NEW REVENUE

A new excise tax was implemented in January 2019 on rental vehicles, which is projected to generate approximately \$70,000 annually. Speaking of, the city also launched online reporting capabilities for excise taxes.

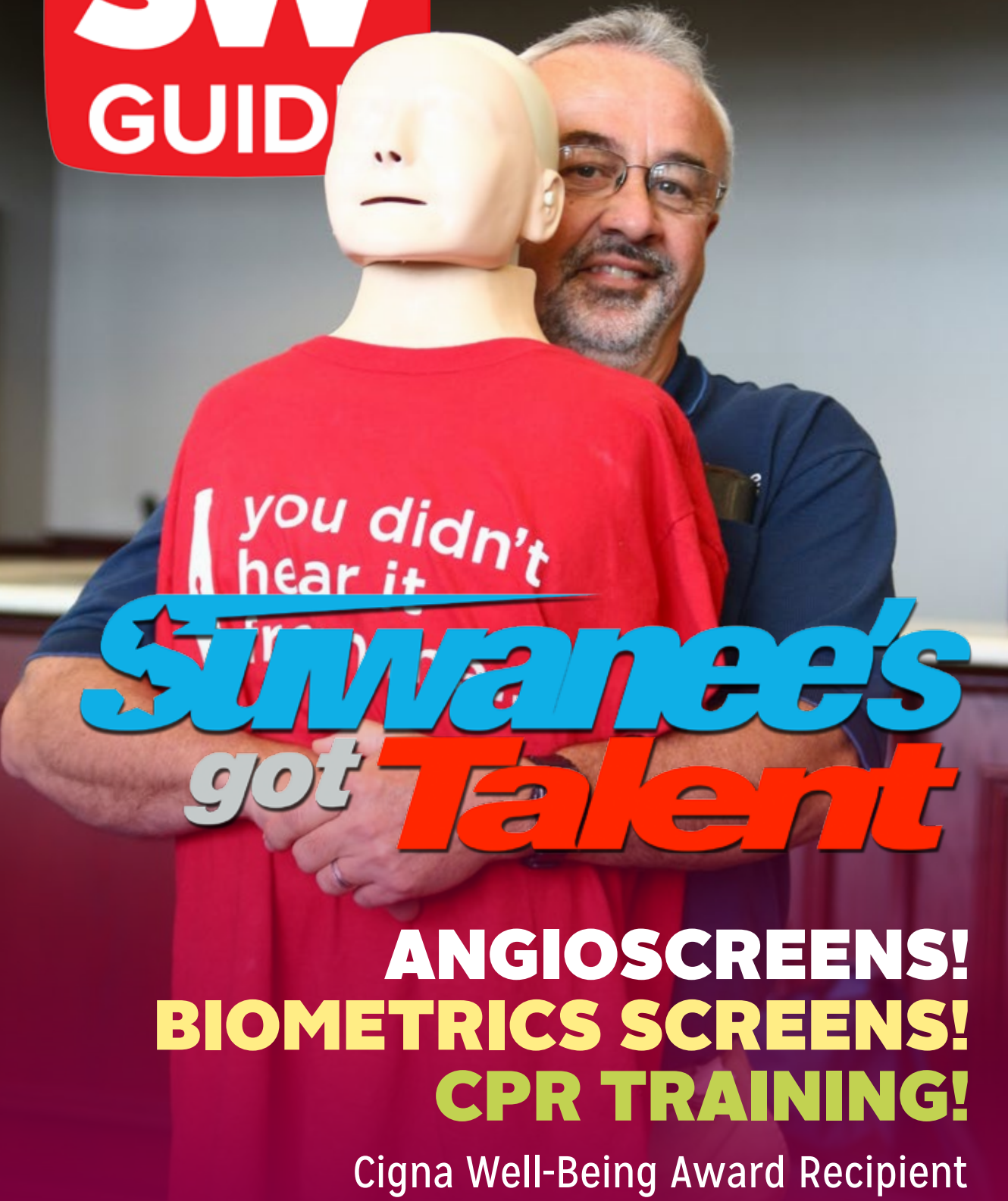
LAW & ORDER

The municipal court temporarily moved across Buford Highway to City Hall in May 2019 in order to make room for renovations – as well as a two-story addition – to the court building at 323 Buford Highway.

The overhaul of the almost 60-year-old building (and Suwanee's original city hall) will **add about 9,000 square feet of space**. Improvements include:

- Expanded lobby to accommodate court session crowds
- Doubled court clerk workspace
- New space to house police Special Enforcement Unit
- New basement space for Public Works and event storage

Construction is expected to be **completed in late spring 2020**.



**Suwanee's
got Talent**

**ANGIOSCREENS!
BIOMETRICS SCREENS!
CPR TRAINING!**

Cigna Well-Being Award Recipient



A SWELL PLACE TO WORK

The City of Suwanee employee wellness program, SWELL, is a voluntary, year-round **initiative to support healthy lifestyle choices** for employees. The mission of the SWELL program is to educate, support, and empower each employee to improve and maintain physical and mental well-being through healthy lifestyle choices. Employee health and well-being is an integral part of the work-life relationship; improvements in this area have resulted in fewer missed days and lower healthcare costs.

In 2019, SWELL hosted four lunch & learns for employees, as well as **complimentary on-sight angioscreenings** (42 participants) and **biometric screenings** (29). Additionally, nine employees were CPR-certified.

WELL-BEING AWARDS

The City of Suwanee was the recipient of this year's Cigna Well-Being Award, recognizing organizations that have successfully created and implemented sustainable workplace wellness programs, creating a culture that enables healthy choices as the norm. The city also earned bronze level recognition from the American Heart Association for taking significant steps to build a culture of health in the workplace.

TAKING CARE OF BUSINESS

The city implemented an employer match to the **457 Deferred Compensation** plan, contributing 50% of employee contributions up to 4%. Employees must contribute at least 4% for the full 2% match. The employee benefit renewal rate was also negotiated from the initial 19.9% down to 5%.

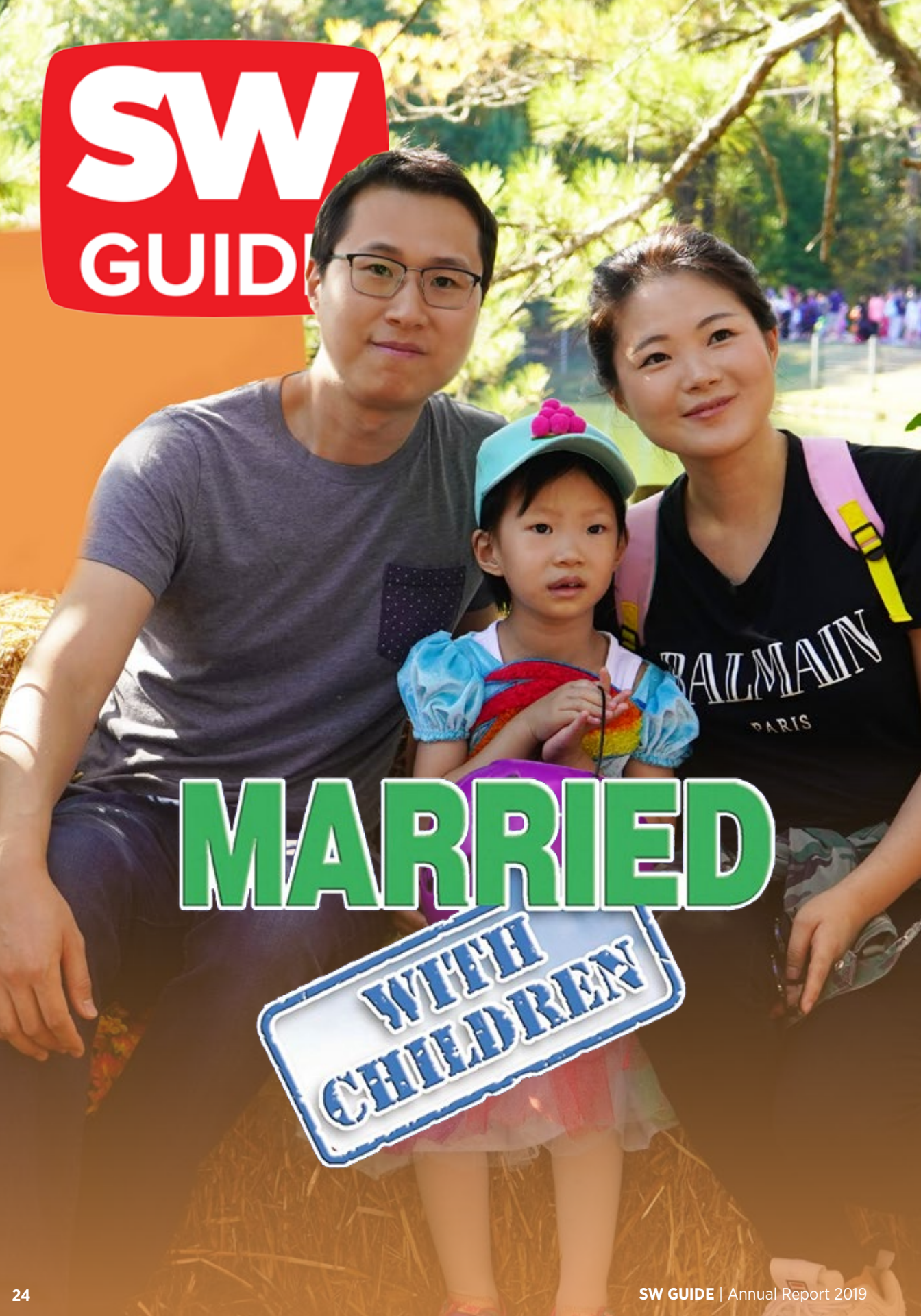
WE'RE AN OPEN BOOK

Open records are documents in the possession of a government that are supposed to be made available to the public upon request. This guarantee is an important part of governmental transparency. In 2019, the City of Suwanee processed 94 open records requests.

YOU'RE HIRED!

It takes approximately 136 employees – including police, public works, court and City Hall staff – to keep the City of Suwanee running. In 2019, the HR department implemented online recruiting and applicant tracking in order to expedite filling open positions.

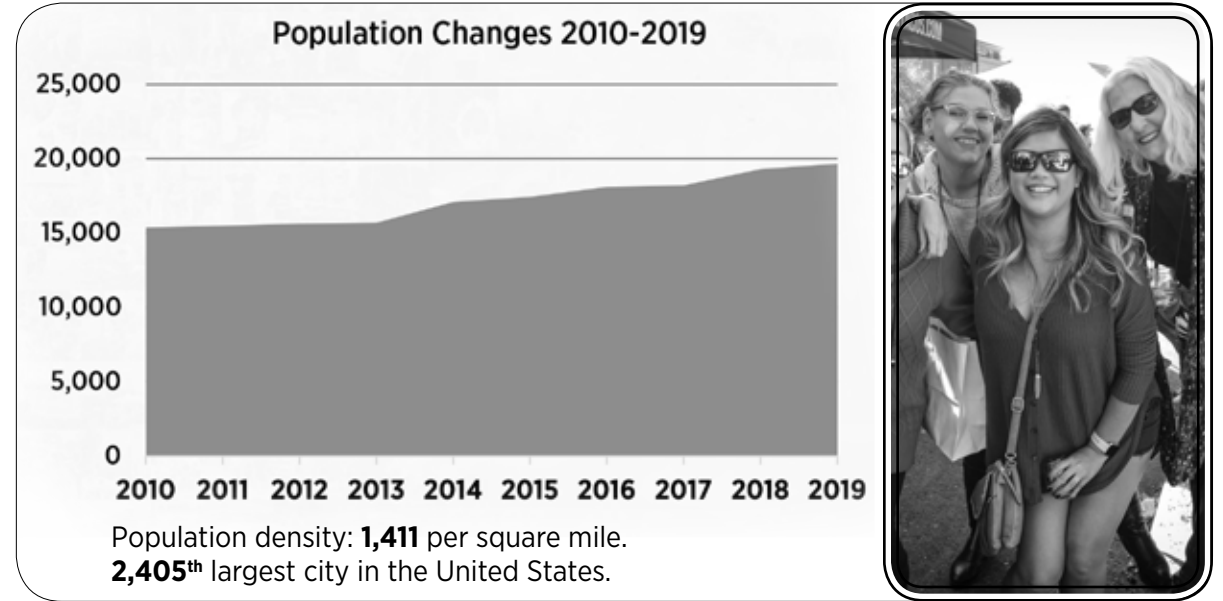
- **5,341** – Total applications received
- **325** – Total applications processed and considered for interview
- **30** – Offer letters
- **27** – New hires
- **13** – Promotions processed
- **4** – Transfers



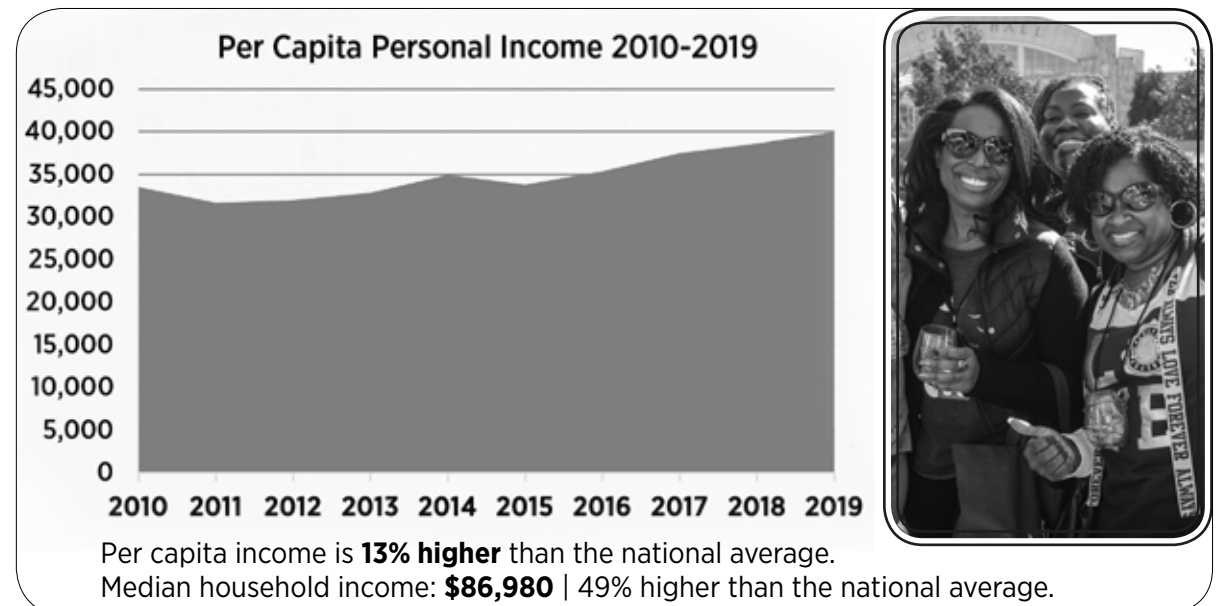
MARRIED

WITH CHILDREN

Information for the City of Suwanee's 2019 demographic snapshot was provided by the American Community Survey 5-Year Estimate Data Profiles, which was based on data collected in the 2010 United States Census. The next United States Census takes place in 2020.



TOTAL POPULATION:	AGES	RACE
20,569	Under 5 years 5%	65% White
MALE: 46%	Under 18 years 25%	20% Asian
FEMALE: 54%	65 and over 10%	10% Black/African-American
	Median age 38.5	7% Hispanic/Latino
		2% Two or more races
	High school graduate or higher (age 25+): 96.2%	
	Bachelor's degree or higher (age 25+): 55.2%	
	Households: 6,699	Person per household: 2.87



Sources: American Community Survey 2018 5-Year Estimate Data Profiles, based on the 2010 United States Census Data 2016 United States Census Bureau American Community Survey (ACS)

CITY COUNCIL

MAYOR Jimmy Burnette 770-868-7115
COUNCIL Dan Foster 678-404-9641
Heather Hall 410-979-7905
Beth Hilscher 678-546-3388
Linnea Miller 678-592-4150
Larry Pettiford 678-464-3651

MANAGEMENT TEAM

CITY MANAGER Marty Allen 770-945-8996
ASSISTANT CITY MANAGER Denise Brinson 770-904-3385
ADMINISTRATIVE SERVICES Elvira Rogers 770-904-3376
BUSINESS SERVICES Jessica Roth 770-904-2789
FINANCIAL SERVICES Amie Sakmar 770-904-2797
PLANNING AND INSPECTIONS Josh Campbell 770-904-3372
POLICE CHIEF Mike Jones 770-904-7611
PUBLIC WORKS James Miller 770-904-3373