



official newsletter of the city of suwanee, georgia

# Suwanee connects

suwanee.com | June 2022

## INSIDE this issue...

4



Seventh Sculptour  
Public Art Exhibit  
Unveiled

9



Keeping Suwanee  
Green & Clean

10



Hot Time, Summer in  
the City!

# SUMMER porch jam

**H**eld in the historic Main Street district, Summer Porch Jam is an old-fashioned summer block party, complete with food trucks and beverages!

The event features multiple artists playing outdoor venues that include the wraparound front porch at Huthmaker Violins, Burnette Rogers Pavilion, Everett's Music Barn, and many front porches along Main Street.

Bring a chair or blanket and stroll from venue to venue, enjoying a variety of musicians! Parking is available at Town Center; from there, it is a short 15-minute walk to Old Town. Complimentary shuttles will also be available.

MEET US IN  
OLD TOWN SUWANEE  
FOR AN EVENING OF  
**MUSIQUE AL FRESCO!**

# 6.24

## 6 - 10 P M MAIN STREET

A FULL SCHEDULE OF  
VENUES AND MUSICIANS CAN  
BE FOUND AT **SUWANEE.COM**



# NORTH GWINNETT HONORS ART STUDENTS CREATE A MURAL IN TOWN CENTER



**The City of Suwanee collaborated with honors art students from North Gwinnett High School to add a colorful new mural to what was previously a boring utility enclosure wall.**

Located directly behind city hall, *Chinese New Year* consists of animals in bright, fun colors representing the twelve Chinese zodiac signs. The Suwanee Public Arts Commission chose North Gwinnett sophomore Li Lin's design.

"I wanted some way to represent everyone in our community, emphasizing the individual's role in making Suwanee what it is. I also wanted a way to incorporate my culture," said Lin. "And I just really wanted to draw all the zodiacs together!"

Accompanied by honors art teacher Dallas Gillespie, 19 students worked approximately 50 hours to complete the mural, which is part of the city's seventh SculpTour exhibit.

"It's such a big project and it's great to be a part of something so big in our community, especially large scale too because we're all used to doing smaller projects and canvases," said Kayla Eyles, president of the NGHS National Art Honor Society.

The mural is designed to engage community members to come together and find their Chinese zodiac animal. Community members are highly encouraged to take photos with their animal and share them on social media.

"The 'hole' in the design is meant for the viewer to have a place to take photos surrounded by the zodiacs," said Lin.

## SPONSOR

DALLAS GILLESPIE

## CO-SPONSOR

KAREN CAMPBELL

## ARTISTS

LI LIN (DESIGNER)

AMITI ARUNMOZHI

MORGAN CHEN

ETHAN CHOI

KAYLA EYLES

CASEY FANCHER

JUHA HWANG

ELLINA JUNG

YUNA KIM

LORELEI KINCHELOE

MISO KO

MINGJIA LI

CYDNEY LIN

PARIS NGUYEN

SOPHIA PERKINS

CLARISSA REIZENSON

SAMANTHA SANDERS

RACHEL SUH

ZICHUN YANG



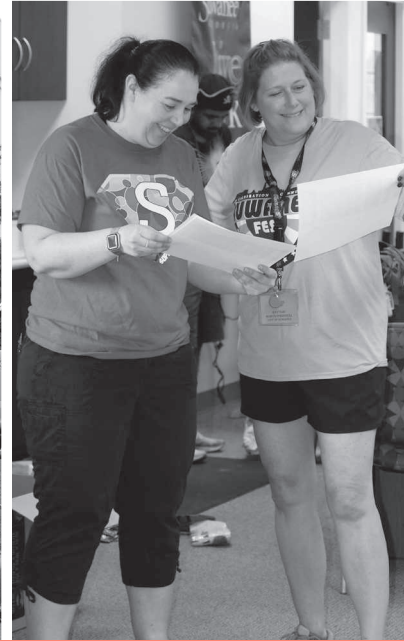
Scan for more information about the City of Suwanee's Public Art program!

**"I wanted some way to represent everyone in our community, emphasizing the individual's role in making Suwanee what it is. I also wanted a way to incorporate my culture," said Lin. "And I just really wanted to draw all the zodiacs together!"**





# CITY OF SUWANEE WINS FIVE SOUTHEASTERN FESTIVALS & EVENTS ASSOCIATION AWARDS



THE CITY OF SUWANEE TOOK HOME

# 5 2022 AWARDS



**BEST EVENT OVER \$75,000 (SILVER) | SUWANEE FEST 2021**

**BEST MASCOT | PARKER**

**BEST PROGRAM OR BROCHURE | SUWANEE FEST 2021 SUWANEE MAGAZINE INSERT**

**BEST MARKETING | SUWANEE ADVENTURES**

**BEST VOLUNTEER | KATE FANALE FOR SUWANEE FEST**

The best and brightest events were spotlighted at the Southeast Festivals and Events Association’s virtual Kaleidoscope Awards on April 26. Designed to recognize the marketing, programming, and overall event, the SFEA Kaleidoscope Awards acknowledge the highest level of achievement in the festival and event industry throughout the southeast United States.

The Southeast Festivals & Events Association (SFEA) is a 501 (c)6 membership-based organization comprised of festival and event planners, venues, and industry service providers. SFEA was founded in 2009 to strengthen the festival and event industry throughout the southeast United States by hosting educational sessions, networking opportunities, award recognition, and additional events throughout the year; thus, allowing for continued professional growth within the festivals and events industry.



Blossom  
Joni Younkings-Herzog



Core Red  
Adam Walls



Inter-Dimensional Species  
Claudia Jane Klein



Love Suwane



Portal Majestic  
Nathan Pierce

# Suwanee SCULPTOUR

# CITY UNVEILS 7TH EXHIBIT

The 17 public art pieces that make up the seventh installment of the city's popular SculpTour temporary sculpture exhibition were installed in Town Center this spring.

Since 2011, the award-winning SculpTour program has showcased nearly 100 pieces in a walkable one-mile area of downtown Suwanee, in concert with the 18 pieces in the city's permanent collection. With goals to enliven Town Center, attract visitors, and stimulate interest in public art in Suwanee, SculpTour adds to the sense of energy, rhythm, and ritual in the city.

"Few suburban cities have a public realm that is as cultivated and central to the identity of the city as Suwanee's parks and public spaces are," commented Denise Brinson, Suwanee Assistant City Manager. "This provides Suwanee with a unique opportunity to add public art that is of special significance and endurance."



Chinese New Year  
NGHS National Art Honor Society  
*See Page 2 to see this piece!*  
Scan for more information about the City  
of Suwanee's Public Art program!





Devil Fish  
Todd Kappes Frahm



Let Your Voice Be Heard  
Jason Dozer



Metaphysica  
Phil Proctor



Sunburst  
Hanna Jubran



Mommy  
Lee Benson



Monocotyledon: Genesis  
Etienne Jackson



Tangled Hare  
Todd Kappes Frahm



Tangled  
Fred Ajanogha



Mr. Rings  
Gus and Lina Ocamposilva



Harriett Tubman Bench  
Gary Lee Price



Griffin  
Jonathan Bowling



## From THE DESK of

HOPE LARISEY

INTEGRATED SCIENCE & ENGINEERING, INC.

*Over the last two years, Integrated Science & Engineering, Inc. (ISE) has been assisting the City of Suwanee in analyzing the city's stormwater infrastructure and making funding recommendations. As part of the process, a 14-member Citizen's Stakeholder Committee studied the stormwater-related issues and recommended that the city consider a stormwater utility. Hope Larisey led the study on behalf of ISE.*

# WHAT IS A STORMWATER UTILITY?

**F**or most people, stormwater raises few concerns unless they are driving through flooded streets or experiencing flooding in their yards or homes. Unfortunately, stormwater can also contribute to less apparent problems relating to our environment. When it rains, our community's water resources are threatened. Stormwater runoff picks up debris, chemicals, dirt, and other pollutants and flows directly into lakes, streams, or wetlands. If it enters a storm drain, the runoff is eventually discharged, untreated, into our local creeks and streams. **In a previous city newsletter article, Suwanee Public Works Director Bob Dean discussed the impacts of rainwater and the city's stormwater infrastructure.**

Scan here to read Bob Dean's article on Stormwater Utility!



As communities grow, stormwater management becomes increasingly important for a variety of reasons. Paved or impervious surfaces – such as driveways, rooftops, sidewalks, streets, and buildings – prevent stormwater from soaking into the ground. These changes alter the flow of surface water, resulting in an increase in the volume and velocity of runoff, as well as an increase in pollutants that end up in our natural water resources.

**Polluted stormwater runoff has become the nation's greatest threat to clean water and can have many adverse effects on plants, fish, animals, and people.**

Management of stormwater runoff is an increasingly important responsibility for local governments. Regulatory requirements and aging drainage infrastructure force local governments all over the nation to implement more comprehensive stormwater management programs as they seek to address drainage system maintenance, capital construction priorities, and to achieve regulatory compliance.

**Stormwater pipes and catch basins deteriorate, impairing their ability to convey stormwater, threatening property, causing road closures, and flooding. In some areas, the problem is severe enough that yards and buildings are impacted by the stormwater runoff.** To address these problems and comply with increasing state and federal regulations, many communities develop and implement comprehensive stormwater management programs funded by a stormwater utility user fee system. Typical stormwater management programs include the following functions:

- Drainage Improvement Projects
- Storm System Maintenance & Repairs
- Floodplain Management
- Cleaning of Pipes/Ditches
- Water Quality Protection & Improvement
- Compliance with State & Federal Regulations



**The city's existing drainage system contains many miles of pipes that are nearing their functional end of life.** This infrastructure needs to be repaired, replaced, and/or rehabilitated. ISE's review of the City of Suwanee's existing system identified over \$12 million in improvements that need to be undertaken in the near future. **Fixing deteriorating pipes now - while not inexpensive - is significantly less expensive than replacing broken pipes in the future.** The \$12 million needed to fix and replace pipes now will only get more costly if the City waits.

A stormwater utility is a user fee system assigned to property and its owner to recover the costs to the local government associated with managing the stormwater runoff generated by that that property. Throughout the country, over 1,800 stormwater utilities have been established. Such utilities create a reserve for stormwater management services (including expenses and depreciation) through user fee charges. **Those charges are designed to be fair and equitable to all property owners that utilize the local government's drainage system, facilities, and services.** Stormwater utilities are already in place in Gwinnett County and nine of its cities. Stormwater utility costs for residential properties in the surrounding areas are typically less than \$8 per month.

Funds collected from the stormwater utility pay for stormwater management-related projects and regulatory compliance programs. Such fee systems provide dedicated funding for necessary stormwater facilities, improve maintenance of existing systems, and provide an enhanced level of service focused on minimizing flooding and reducing water pollution. Additionally, stormwater fees fund regulatory compliance activities in accordance with Georgia EPD requirements.

The amount of impervious area for a parcel is related to the increased quantity of runoff and increased non-point source pollutants discharging into the government's drainage system and local waterbodies. This increased burden or demand (water quantity and quality) placed on the government's drainage system and local waterbodies results in higher costs to provide stormwater management services for that parcel. The increased demand associated with impervious surface-related impacts to the local government's drainage

system and local waterbodies is the basis for the user fee charge. **As such, larger parcels with greater amounts of impervious surface area are charged higher fees based on the relative demand placed on the local government's drainage system and local waterbodies.**

For these reasons, stormwater utilities often use the amount of impervious surface on a parcel to determine the impact it has on the entire system. This is because the amount of impervious surface area (i.e., concrete, asphalt, roof tops, etc.) is strongly related to amount of stormwater runoff the site produces. **This information can then be used to determine a parcel's proportionate share of the cost-of-service provided by the local government.**

Without a proportionate share stormwater utility, communities commonly fund the costs to maintain their stormwater systems through property taxes and other similar tax funds. As the EPA notes, stormwater programs funded with property taxes are "not equitable, because the basis for determining property taxes, assessed property value, is irrelevant to the cost of stormwater management for that property." With those approaches large stormwater generators such as commercial shopping centers and large industrial sites do not fully fund their proportionate share of stormwater maintenance. **Stormwater utilities help address this inequity.**

Stormwater utilities are effective and equitable programs that help localities fund and maintain safe and effective stormwater systems. Given the city's extensive and costly stormwater system needs, the city's Citizen Stakeholder Committee recommended that the city strongly consider establishment of a stormwater utility.

**Scan for more information about stormwater utilities.**



# COME TO THE GREENSIDE

## Sweep the Creek

The City of Suwanee, in partnership with the Gwinnett County Department of Water Resources, hosted Sweep the Hooch - a major watershed conservation project - on March 26. A two-mile section of Suwanee Creek was cleaned from the Buford Highway entrance to Suwanee Creek Park and to the Lawrenceville-Suwanee Road bridge. Thank you to the forty volunteers who swept and picked up six tires, one mattress, and enough trash to fill 90 large trash bags from the banks of the creek! An additional thank you to John and Katie Butler and their staff for coordinating Sweep the Hooch, providing the volunteers, equipment, and managing the entire project.



## The Future is Greener

Approximately 25 children and their parents from the Suwanee Homeschool Group conducted a lesson on pollution and litter at White Street Park. The group worked together to clean up the woods and creek, filling two garbage bags with over 100 plastic items and other non-plastic/non-organic trash.





# Featured Pollinator Flowers

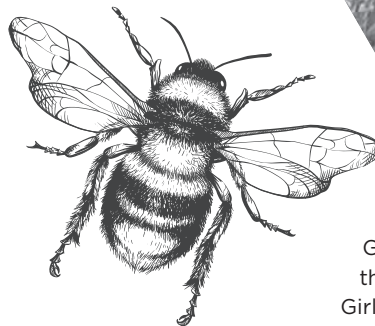
- Siberian Wallflower
- Lanceleaf Coreopsis
- Sweet William
- Columbine
- Purple Coneflower
- Black Eyed Susan
- Crimson Clover
- Candytuft
- China Aster
- Cosmos
- Shasta Daisy
- Zinnia

## Pollinator Areas

The field of wildflowers on McGinnis Ferry Road near Suwanee Sports Academy are not only beautiful, but useful to our community as well! City of Suwanee Environmental Services Manager Bill Stinehart has created this no-mow, permanent pollinator area in an effort to increase the numbers of bees, butterflies, and other pollinators.

"It takes several years to establish a permanent pollinator area; I began this one in February 2021, and seed-supplemented again in February 2022," said Stinehart. "Each season the flowers bloom, provide beauty and food for pollinators, and then drop their mature seeds for next season—thus each year, the pollinator garden becomes better."

"While providing food and habitat, this large area does not have to be mowed and saves on labor, machinery wear and tear, etc. A win-win project!"



## A Bee's Life

Girl Scout Troop 2440 capped off the "take action" component of the Girl Scout Outdoor Journey by building and installing pollinator/bee houses at The Orchard at White Street Park and the mow-free pollinator zone. Mason bees are not honeybees and do not live in hives; they are wonderful pollinators that live in the long tubes in these houses. The Girls Scouts also assisted with the pollinator area as part of this project (see above).

## SYL Sims Lake Erosion Control Project



A stormwater drain dumping silt and sediment into Sims Lake during rain periods was creating a PH imbalance and enhancing algae blooms, both of which make it difficult for fish and aquatic wildlife to acquire the necessary oxygen to survive. Suwanee Environmental Services Manager Bill Stinehart came up with a plan to fix the issue: plant 200 pots of vegetation in the drain area and along the banks of the culvert to reduce flow velocity and "filter" out a portion of the silt and sediment particles.

Luckily, several Suwanee Youth Leaders volunteered to help with the planting, along with adding 1,000 pounds of medium Tennessee fieldstone to supplement the channel and bank erosion prevention. These stones were placed directly in front and sides of the plantings to allow the vegetation to create rhizomes, spread rapidly, and stabilize the channel and bank.





JUST IMAGINE HOW  
MUCH **COOLER** I'LL BE IN  
**SUMMER**



**2022 SUWANEESUMMEREVENTS**

**Food Truck Friday**  
JUNE 3 | 5:30 PM



**Movies Under the Stars: Double Feature**  
JUNE 11 | 7 PM - SHARK TALE  
| 8:45 PM - JAWS

**Summer Porch jam**  
JUNE 24 | 6PM  
*See cover article for details!*

**Food Truck Friday**  
JULY 8 | 5:30PM

**Movies Under the Stars: Christmas in July!**  
JULY 16 | 7 PM - THE GRINCH  
| 8:45 PM - NATIONAL LAMPOON'S  
CHRISTMAS VACATION

**Broadway in the Park**  
JUNE 29 & 30 | 7PM - SISTER ACT JR.  
FOLLOWED BY - THE SOUND OF MUSIC

**Food Truck Friday**  
AUGUST 5 | 5:30PM



**Button Down Dash**  
AUGUST 6 | 7:45PM  
*Part of the Suwanee Running Series!*

**August Concert & Wing Fest**  
AUGUST 13 | 5PM

**Annandale Extra mile**  
AUGUST 27 | 8AM



**Visit [Suwanee.com](https://www.suwanee.com) for more  
details and up-to-date information!**



*City Staff*  
**RECOGNIZED**

City of Suwanee staff recently celebrated and recognized some of its top employees for the year 2021. The following employees were nominated by their peers and recognized by City Manager Marty Allen for exemplary service:

**Results Champions**

Champion of results and progress, recognized for achieving a monumental accomplishment in the past year.

**Ivan Lored-Balderas | Public Works**  
**Toni Shrewsbury | Community  
& Economic Development**

**Teamwork Champions**

Works behind the scenes to ensure everyone looks good and Team Suwanee can shine.

**Dispatcher Aryn Spencer | Police**  
**Kathy Jones | Court**

**Stewardship Champions**

Promotes logic, procedure, and safety so that projects and initiatives exhibit Suwanee quality and are successful.

**Cassandra Jackson | Planning & Inspections**  
**Devin Snapp | Business Services**

**Innovation Champions**

Never satisfied with the status quo and always seeking to improve; a creative visionary.

**Juan Beltran | Public Works**  
**Josh Campbell | Planning & Inspections**

**Champions of the People**

Understands that the actions and initiatives of Team Suwanee affect people and promotes it in his or her actions and influences others to do the same.

**Taranta Anderson | Business Services**  
**Sergeant Chance Belcher | Police**

Several members of the Suwanee Police Department were recognized for outstanding work in 2020, including:

**Officer of the Year | Officer Brian Bartlett**  
**Civilian of the Year | Donna Copeletti**  
**Supervisor of the Year | Sergeant Brody Thomas**  
**Top Gun | Sergeant Chance Belcher**  
**Chief's Award | Corporal Sung Jae Park**  
**Lifesaving Award | Officer Isaiah Fernald,**  
**Officer Todd Pacholke**



# HIDDEN SUWANEЕ:

## The Orchard at White Street Park

**D**eep in the heart of historic Suwanee sits the hidden jewel of Suwanee. Tucked away just past the community garden sits the Orchard at White Street Park: a fully functional, open to the public orchard; the first of its kind in the Southeast.

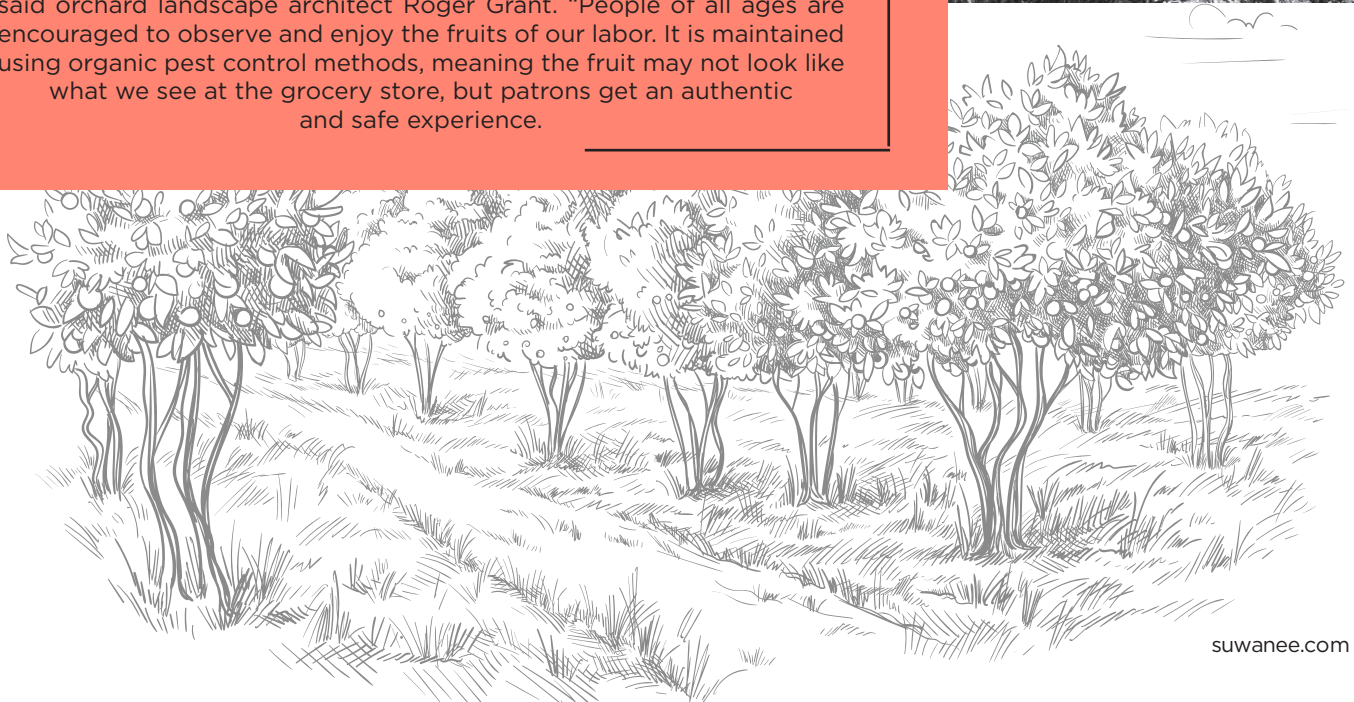
The City of Suwanee and Harvest Farm collaborated to develop the orchard to provide

families with a fun and engaging space that changes through the seasons, encourages creative, outdoor play, and grows fresh fruit.

In addition to trees yielding fruit, the Orchard at White Street Park also includes lawn areas for relaxation and play, a pavilion, winding pathways, and natural children's play features throughout the one-acre site.



The orchard was designed to incorporate fruiting plants, winding paths, lawns and natural play features. It is a unique and exceptional space for discovery and exploration and offers hands-on learning opportunities," said orchard landscape architect Roger Grant. "People of all ages are encouraged to observe and enjoy the fruits of our labor. It is maintained using organic pest control methods, meaning the fruit may not look like what we see at the grocery store, but patrons get an authentic and safe experience.



## UPCOMINGEVENTS

official newsletter of the city of suwanee, georgia

### JUNE 22

<b>3</b>	Food Truck Friday	5:30 pm
<b>4</b>	Suwanee Farmers Market	8:00 am
<b>7</b>	Planning Commission Meeting	6:30 pm
<b>8</b>	Suwanee Public Art Commission Meeting	6:00 pm
<b>11</b>	Suwanee Farmers Market	8:00 am
<b>11</b>	Movies Under the Stars: Double Feature	7:00 pm
<b>13</b>	Suwanee Fest Planning Meeting	6:30 pm
<b>16</b>	City Council Workshop	5:30 pm
<b>16</b>	Proposed FY 2023 Budget Public Hearing	5:30 pm
<b>18</b>	Suwanee Farmers Market	8:00 am
<b>21</b>	Downtown Development Authority Meeting	7:30 am
<b>21</b>	Zoning Board of Appeals Meeting	6:30 pm
<b>24</b>	Summer Porch Jam (Old Town)	6:00 pm
<b>25</b>	Suwanee Farmers Market	8:00 am
<b>28</b>	City Council Meeting	6:30 pm
<b>28</b>	Proposed FY 2023 Budget Public Hearing	6:30 pm

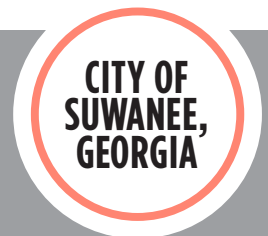
### JULY 22

<b>2</b>	Suwanee Farmers Market	8:00 am
<b>8</b>	Food Truck Friday	5:30 pm
<b>9</b>	Suwanee Farmers Market	8:00 am
<b>11</b>	Suwanee Fest Planning Meeting	6:30 pm
<b>12</b>	Planning Commission Meeting	6:30 pm
<b>13</b>	Suwanee Public Art Commission Meeting	6:00 pm
<b>14</b>	City Council Workshop	5:30 pm
<b>16</b>	Suwanee Farmers Market	8:00 am
<b>16</b>	Movies Under the Stars: Double Feature	7:00 pm
<b>19</b>	Zoning Board of Appeals Meeting	6:30 pm
<b>19</b>	Downtown Development Authority Meeting	7:30 am
<b>23</b>	Suwanee Farmers Market	8:00 am
<b>26</b>	City Council Meeting	6:30 pm
<b>29</b>	Broadway in the Park	7:00 pm
<b>30</b>	Suwanee Farmers Market	8:00 am
<b>30</b>	Broadway in the Park	7:00 pm

**MAYOR** Jimmy Burnette 770/868-7115  
**COUNCIL** Pete Charpentier 770/757-3323  
 Heather Hall 410/979-7905  
 Beth Hilscher 678/546-3388  
 Linnea Miller 678/592-4150  
 Larry Pettiford 678/464-3651

**CITY MANAGER** Marty Allen 770/945-8996  
**ASSISTANT CITY MANAGER** Denise Brinson 770/904-3385  
**CITY CLERK** Robyn O'Donnell 770/904-2790  
**FINANCIAL SERVICES** Amie Sakmar 770/904-2797  
**PLANNING & INSPECTIONS** Josh Campbell 770/904-3372  
**POLICE CHIEF** Cass Mooney 770/904-7610  
**PUBLIC WORKS** Bob Dean 770/904-3373  
**EDITOR** Abby Wilkerson 770/945-3386

Unless otherwise noted, City of Suwanee public meetings are at City Hall, 330 Town Center Avenue. Dates subject to change; check [suwanee.com](http://suwanee.com) for updates.



FOLLOW US ON SOCIAL MEDIA:

