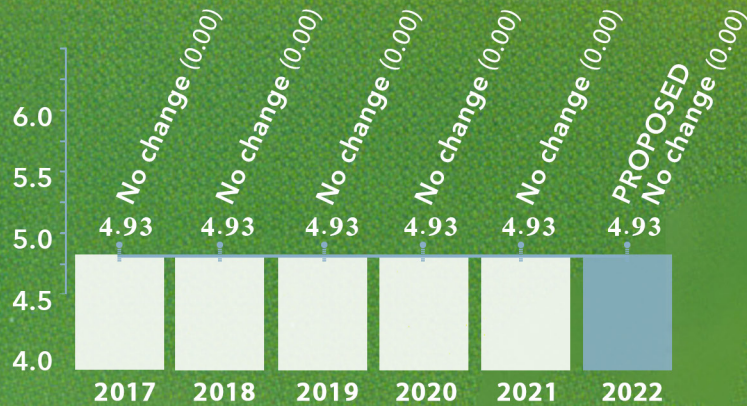


Millage Rate six-year history



Notice of hearings

The public is hereby notified that on **August 11, 2022 at 5:30 pm** and on **August 23, 2022 at 12:00 pm and 6:30 pm** at Suwanee City Hall, 330 Town Center Avenue, the Mayor and City Council will hold **three public hearings** to give citizens the opportunity to provide written and oral comments on the proposed 2022 millage rate.

All interested parties are encouraged to attend.

Some distortions in the figures may occur since data was obtained from city and county records. These figures do not reflect billing adjustments to the digest.

If your taxes are paid from an escrow account through your mortgage lender, please forward a copy of your 2022 tax bill to your lender to ensure prompt payment.

MILLAGE RATE

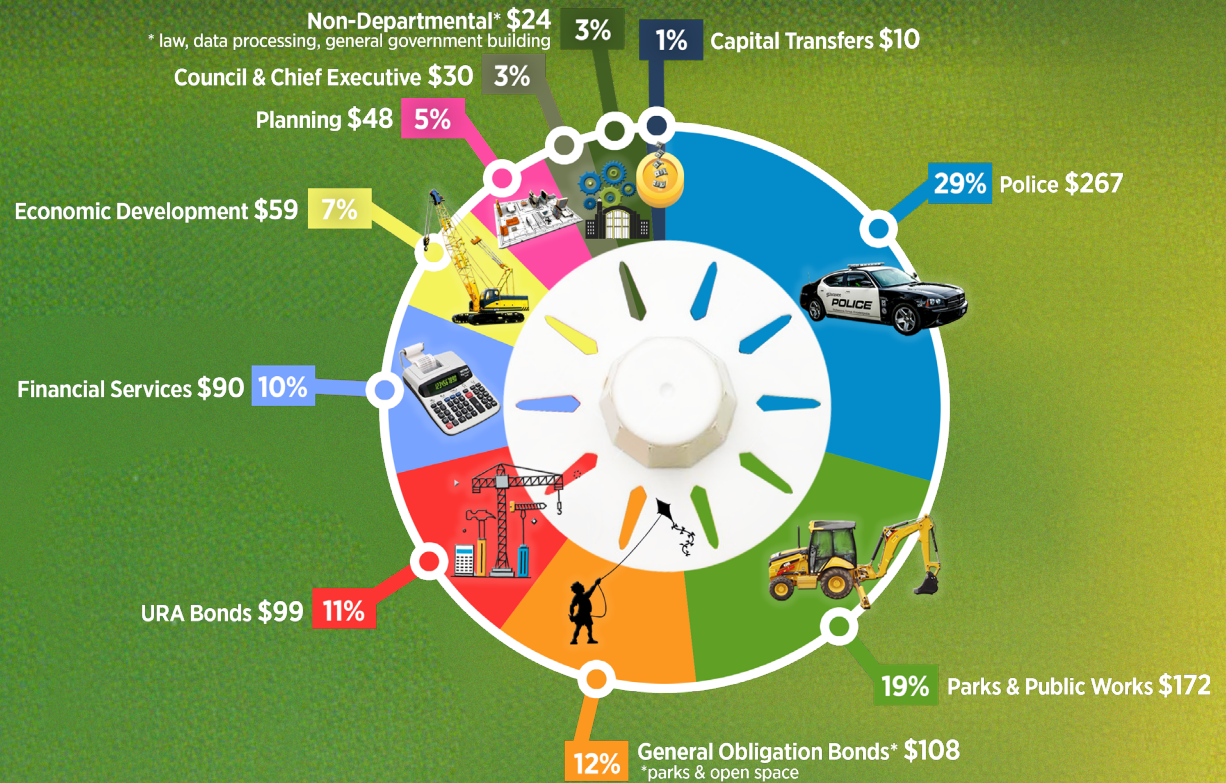
2022 HEARING

city of
Suwanee
georgia

Where do your taxes go?

The City provides a wide range of municipal services to citizens including police protection, parks and recreation, planning and zoning, building inspections, code enforcement, economic and community development, special events, municipal court services, and infrastructure maintenance.

In 2022, the average home value in Suwanee is \$460,000 and the typical resident will pay about \$907 in property taxes. The chart to the right answers a common question asked by Suwanee residents, "Where do my property taxes go?"



Current 2022 tax digest and 5 year history of levy

The City of Suwanee does hereby announce that the millage rate will be set at a meeting to be held at Suwanee City Hall, located at 330 Town Center Avenue, Suwanee, Georgia on **August 23, 2022 at 6:30 pm** and pursuant to the requirements of O.C.G.A Section 48-5-32 does hereby publish the following presentation of the current year's tax digest and levy, along with the history of the tax digest and levy for the past five years.

	2017	2018	2019	2020	2021	2022
Real & Personal	1,261,793,870	1,343,105,950	1,463,763,960	1,607,322,332	1,679,841,940	2,091,166,720
Motor Vehicles	16,178,630	11,381,600	8,843,930	6,847,870	5,462,550	4,692,740
Mobile Homes	5,120	4,760	4,520	4,520	4,520	4,520
Heavy Duty Equipment	150,730	124,894	8,635	29,950	2,639	58,200
Gross Digest	1,278,128,350	1,354,617,204	1,472,621,045	1,614,204,672	1,685,311,649	2,095,922,180
Less M & O Exemptions	80,192,635	76,397,430	65,204,205	84,644,208	77,042,370	96,579,206
Net M & O Digest	1,197,935,715	1,278,219,774	1,407,416,840	1,529,560,464	1,608,269,279	1,999,342,974
Adjusted Net M&O Digest	1,197,935,715	1,278,219,774	1,407,416,840	1,529,560,464	1,608,269,279	1,999,342,974
Gross M&O Millage	4.930	4.930	4.930	4.930	4.930	4.930
Less Rollbacks						
Net M&O Millage	4.930	4.930	4.930	4.930	4.930	4.930
Total City Taxes Levied	\$5,905,823	\$6,301,623	\$6,938,565	\$7,540,733	\$7,928,768	\$9,856,761
Net Taxes \$ Increase	\$451,289	\$395,800	\$636,942	\$602,168	\$388,034	\$1,927,993
Net Taxes % Increase	8.27%	6.70%	10.11%	8.68%	5.15%	24.32%