

HISTORIC "PIERCE'S CORNER" AVAILABLE

597 MAIN STREET | HISTORIC 'OLD TOWN' SUWANEE, GEORGIA 30024

7,020 SF
2 STORY BLDG

GREAT SPACE FOR
RESTAURANT/BAR
WITH EVENT
SPACE, TAPROOM,
OR OFFICE UPSTAIRS

RECENTLY WHITE
BOXED W/ OVER
\$1.7M OF
IMPROVEMENTS

HISTORIC AREA OF
OLD TOWN SUWANEE

VIBRANT CITY
SPONSORED
MURAL PROJECT
ON STREET WALL

FOR LEASE

For information, contact:
Ryan Denbow, ccim
rdenbow@jwbrealty.com

(404) 353-2875

JWB Realty Services
3400 Rivergreen Ct.
Suite 500
Duluth, Georgia 30096

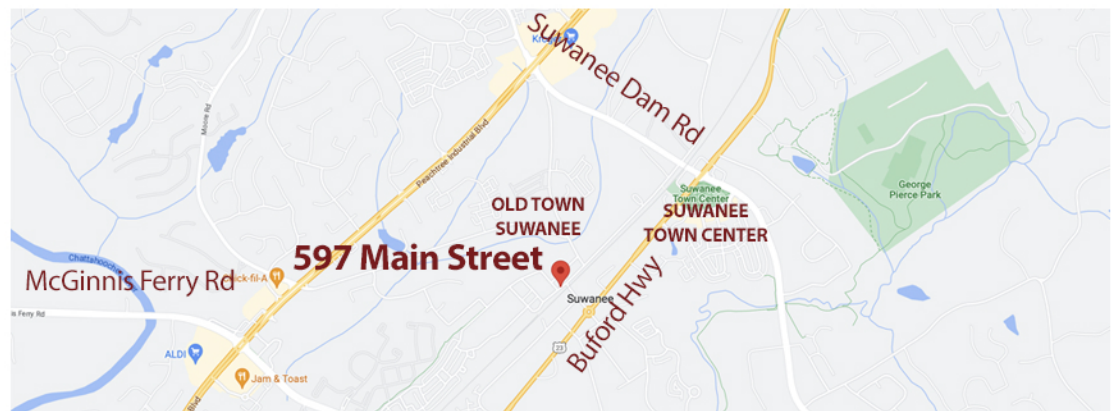
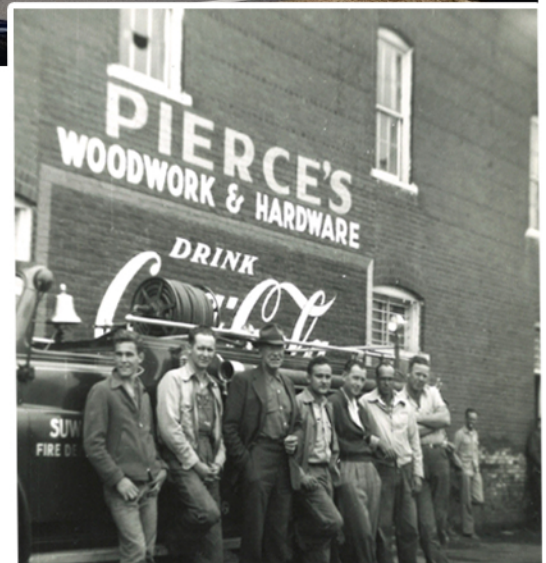
www.jwbrealty.com

JWB
Realty Services, LLC



HIGHLIGHTS

- 6,000 SF original building + 1,020 SF addition
- Historic building located next to the NS rail line in historic Old Town Suwanee
- Built in 1910 / Renovated 2023/2024
- Restaurant location with additional opportunity for office, retail or event space
- Recent improvements include new HVAC, floor, drainage, patio, deck, water line, paint, steel structural frame, storefront, windows, greasetraps & fire line stub
- Elevator pad ready if needed
- White box ready for interior improvements
- Low Interest Revolving Loan Funds available



The information contained herein has been obtained from a source deemed reliable. JWB Realty Services has no reason to doubt its accuracy, however we do not guarantee it. JWB Realty Services is acting as agent for, and is being compensated by the owner of the property, and is not acting as agent for the prospective tenant.